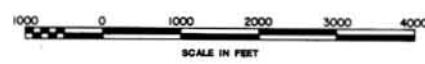
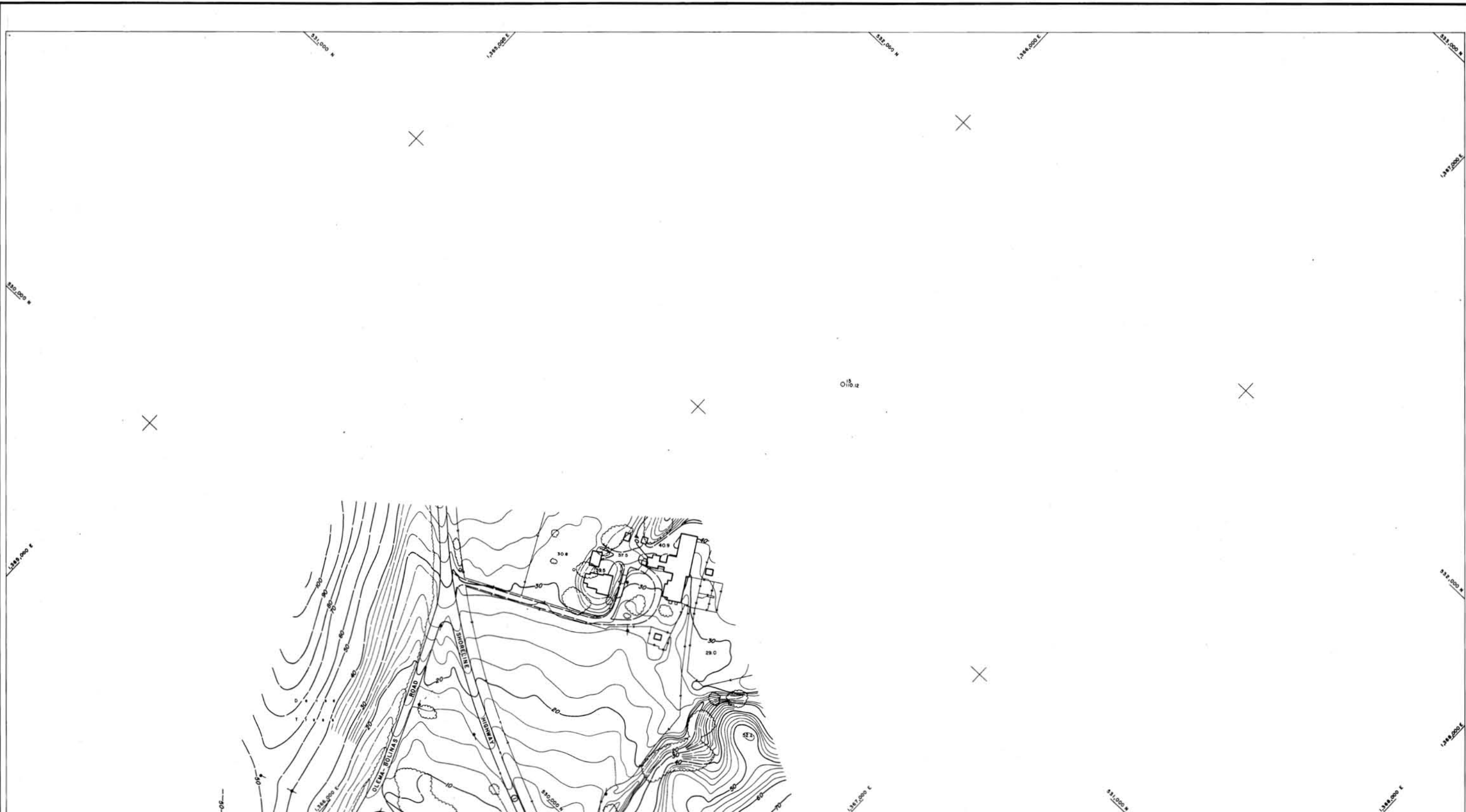


NOTES
 SURVEYED BY TOWILL INC. FOR THE CORPS OF ENGINEERS.
 BASE MAPS WERE COMPILED BY PHOTOGRAMMETRIC METHODS FROM AERIAL PHOTOGRAPHY PLANS 15 SEPTEMBER 1978.
 PLANE GRID BEARINGS AND COORDINATES ARE BASED ON THE STATE OF CALIFORNIA COORDINATE SYSTEM (LAMBERT CONFORMAL PROJECTION), ZONE 2 CALIFORNIA, AS DESCRIBED IN U.S.G. & G.S. SPECIAL PUBLICATION NO. 288.
 ELEVATIONS ARE BASED ON THE DATUM OF MEAN SEA LEVEL.
 REFERENCE BENCH MARK IS A U.S.G. & G.S. BRONZE DISK STAMPED M480, 1981 LOCATED 0.8 MILES NORTH ALONG SHORELINE HWY. FROM THE POST OFFICE IN BOLINAS AT A BRIDGE OVER PINE GULCH CREEK IN THE TOP OF THE SOUTHWEST YEREWALL APPROX. 400 FEET NORTH OF BOLINAS UNION SCHOOL. ELEVATION IS 15.08 FEET M.S.L.
 CONTOUR INTERVAL IS 2 FEET



SYMBOL	DESCRIPTION	DATE	APPROVAL
REVISIONS			
Towill Inc. <small>THE HERBERT STREET AND PROVEDEN, CALIFORNIA 94028</small>		U. S. ARMY ENGINEER DISTRICT, SAN FRANCISCO CORPS OF ENGINEERS SAN FRANCISCO, CALIFORNIA	
DRAWN BY: MARIN COUNTY		CALIFORNIA	
BOLINAS LAGOON			
TOPOGRAPHY			
TRACED BY:	APPROVED:	DATE:	
CHECKED BY:	CHIEF, DISTRICT ENGINEER	SCALE: 1" = 1000'	JOB NO.
SUBMITTED:	PREPARED UNDER THE DIRECTION OF	DESIGN NUMBER	
APPROVAL RECOMMENDED:	COLONEL, C.E., DISTRICT ENGINEER	SHEET	OF 20



NOTES:
 SURVEYED BY TORILL, INC. FOR THE CORPS OF ENGINEERS.
 BASE MAPS WERE COMPILED BY PHOTOGRAMMETRIC METHODS FROM AERIAL PHOTOGRAPHY FLOWN 18 SEPT. 1978.
 PLANE AND BEARINGS AND COORDINATES ARE BASED ON THE STATE OF CALIFORNIA COORDINATE SYSTEM (LAMBERT CONFORMAL PROJECTION), ZONE 8 CALIFORNIA, AS DESCRIBED IN U.S.G.C. & G.S. SPECIAL PUBLICATION NO. 263. ELEVATIONS ARE BASED ON THE DATUM OF MEAN SEA LEVEL.
 REFERENCE BENCH MARK IS A U.S.G.C. & G.S. BRONZE DISK STAMPED MAR. 1951 LOCATED 0.8 MILES NORTH ALONG SHORELINE HWY. FROM THE POST OFFICE IN BOLINAS AT A BRIDGE OVER PINE GULCH CREEK IN THE TOP OF THE SOUTHWEST HIGHWALL, APPROX. 400 FEET NORTH OF BOLINAS UNION SCHOOL. ELEVATION IS 16.05 FEET M.S.L.
 CONTOUR INTERVAL IS 2 FEET

- LEGEND**
- △ SUSCOL
 - × BM 5457 235.87
 - 99+12.33
 - 56.7 (Field)
 - 23.5 (Plotted)
 - FIRST ST.
 - PAVED ROAD
 - UNPAVED, PRIVATE OR UNIMPROVED ROAD
 - TRAIL
 - SIDEWALK (Small scale drawing)
 - RAILROADS (Drawn to scale)
 - WALL
 - FENCE
 - GUARD RAILING
 - SKEDDINGS
 - FOUNDATIONS, SLABS, PARKING AREA, PILING
 - OILVERT. BRIDGE

- POWER LINE
- POWER LINE (TOWER BASE TO SCALE)
- PIPE
- PIPE LINE LABEL WATER, OIL, ETC., IF KNOWN
- AREAS SUCH AS DUMPS, MUD FLATS, EXCAVATIONS, ETC.
- WATER SURFACE-STREAM, LAKE, POND
- TANK
- FIRE HYDRANT
- UTILITY POLE
- CATCH BASIN
- STREET LIGHT
- TREE OR BRUSH COVER
- MANHOLE
- (Label) FLAGPOLE, STANDPIPE, STACK, ETC.
- PRINCIPAL POINT



2
3
4
5
6
7
8
9
10
11
12
13
14
15
16
17
18
19
20

SHEET INDEX



SYMBOL		DESCRIPTION	DATE	APPROVAL
REVISIONS				
TOWILL, INC.		U. S. ARMY ENGINEER DISTRICT, SAN FRANCISCO CORPS OF ENGINEERS SAN FRANCISCO, CALIFORNIA		
DRAWN BY:	MARIN COUNTY		CALIFORNIA	
TRACED BY:	BOLINAS LAGOON			
CHECKED BY:	TOPOGRAPHY			
SUBMITTED:				
APPROVAL RECOMMENDED:	APPROVED:	DATE:		
CHIEF, DESIGN AND BRANCH	CHIEF, ENGINEERING DIVISION	SCALE: 1" = 100'		
PREPARED UNDER THE DIRECTION OF		DRAWING NUMBER		
JOHN M. ADSIT				
COLONEL, C.E., DISTRICT ENGINEER				



NOTES:
 SURVEYED BY TOMILL, INC. FOR THE CORPS OF ENGINEERS.
 BASE MAPS WERE COMPILED BY PHOTOGRAMMETRIC METHODS FROM AERIAL PHOTOGRAPHY FLOWN 18 SEPT. 1978.
 PLANE GRID BEARINGS AND COORDINATES ARE BASED ON THE STATE OF CALIFORNIA COORDINATE SYSTEM (LAMBERT CONFORMAL PROJECTION), ZONE 3 CALIFORNIA, AS DESCRIBED IN U.S.C. & G.S. SPECIAL PUBLICATION NO. 253. ELEVATIONS ARE BASED ON THE DATUM OF MEAN SEA LEVEL.
 REFERENCE BENCH MARK IS A U.S.C. & G.S. BRONZE DISK STAMPED M480, 1951 LOCATED 0.9 MILES NORTH ALONG SHORELINE HWY. FROM THE POST OFFICE IN BOLINAS, AT A BRIDGE OVER PINE DULCH CREEK IN THE TOP OF THE SOUTHWEST WINDFALL, APPROX. 400 FEET NORTH OF BOLINAS UNION SCHOOL. ELEVATION IS 15.03 FEET N.G.V.D.
 CONTOUR INTERVAL IS 2 FEET.

- △ SUSCOL
- × BM 5407
235.67
- o 99+12.33
- 56.7 (Field)
- 23.5 (Pitover)
- FIRST ST.
- PAVED ROAD
- UNPAVED PRIVATE OR UNIMPROVED ROAD
- TRAIL
- SIDEWALK
(Small scale drawing)
- RAILROADS
(Open to scale)
- WALL
- WALLS-RETAINING WALL SEAWALL, ETC.
- FENCE
- GUARD RAILING
- BUILDINGS
- FOUNDATIONS SLABS PARKING AREA, PILING
- ALVERT. BRIDGE

LEGEND

- +—+—+—+— POWER LINE
- +—+—+—+—+— POWER LINE (TOWER BASE TO SCALE)
- +—+—+—+—+— PIPE
- (Label) PIPE LINE LABEL WATER, OIL, ETC., IF KNOWN
- (Label) AREAS SUCH AS DUMPS, MUD FLATS, EXCAVATIONS, ETC.
- (Label) WATER SURFACE-STREAM, LAKE, POND
- TANK
- FIRE HYDRANT
- +—+—+—+—+— UTILITY POLE
- CATCH BASIN
- +—+—+—+—+— STREET LIGHT
- TREE OR BRUSH COVER
- MANHOLE
- (Label) FLAGPOLE, STANDPIPE, STACK, ETC.
- +—+—+—+—+— PRINCIPAL POINT

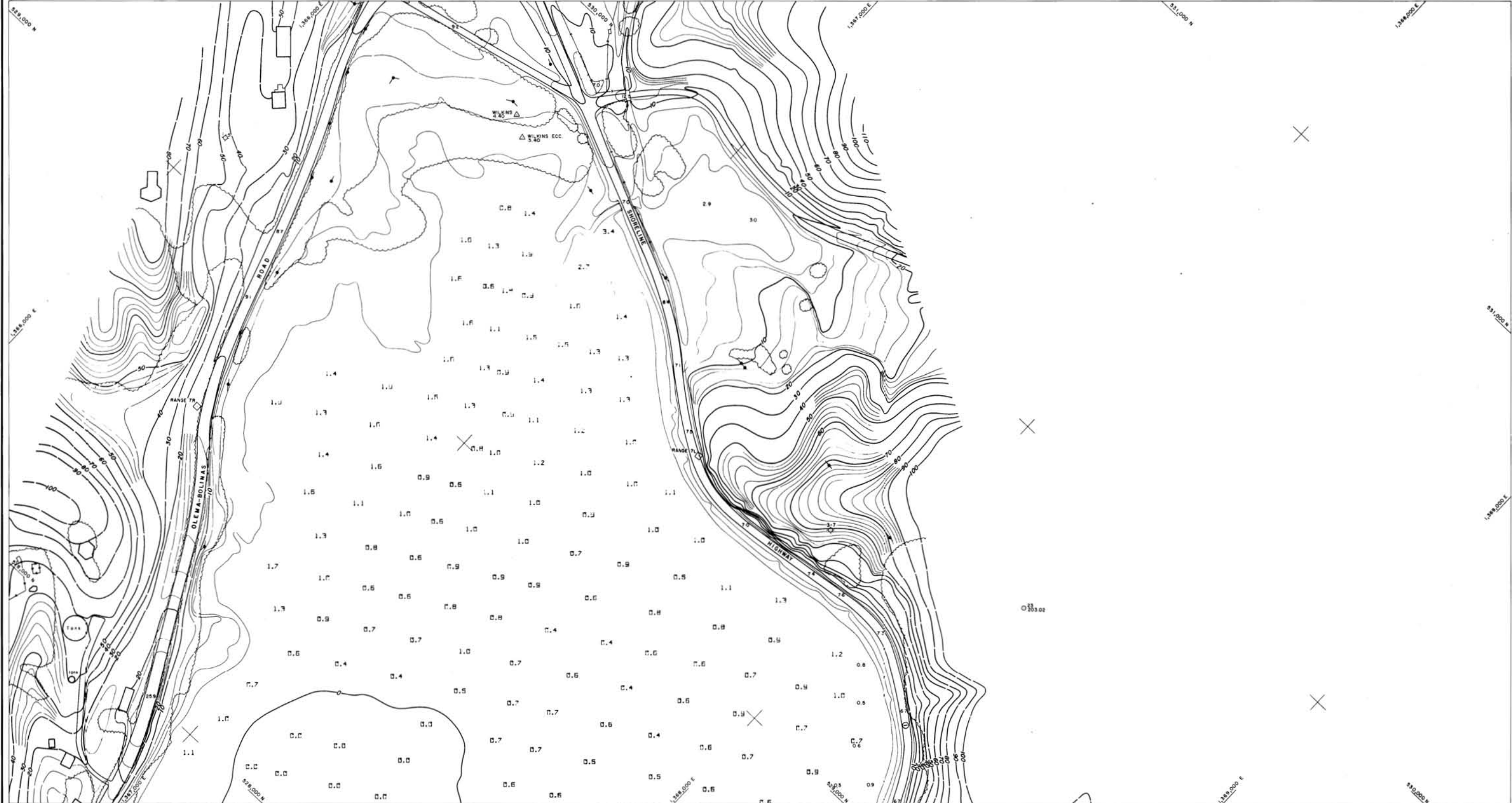


	2
3	4
5	6
7	8
9	10
11	12
13	14
15	16
17	
18	
19	
20	

SHEET INDEX



SYMBOL		DESCRIPTION		DATE	APPROVAL
REVISIONS					
DRAWN BY:		MARIN COUNTY		CALIFORNIA	
TRACED BY:		BOLINAS LAGOON		TOPOGRAPHY	
CHECKED BY:		PREPARED UNDER THE DIRECTION OF		SCALE: 1" = 100'	
SUBMITTED:		COLONEL, C.E., DISTRICT ENGINEER		JOB NO.	
APPROVAL RECOMMENDED:		APPROVED:		DATE:	
CHIEF, DESIGN & BRANCH		CHIEF, ENGINEERING DIVISION		DRAWING NUMBER	
				SHEET 3 OF 20	



NOTES
 SURVEYED BY TOMILL INC. FOR THE CORPS OF ENGINEERS.
 BASE MAPS WERE COMPILED BY PHOTOGRAMMETRIC METHODS FROM AERIAL PHOTOGRAPHY FLOWN 18 SEPT. 1978.
 PLANE GRID BEARINGS AND COORDINATES ARE BASED ON THE STATE OF CALIFORNIA COORDINATE SYSTEM (LAMBERT CONFORMAL PROJECTION), ZONE 3 CALIFORNIA, AS DESCRIBED IN U.S.C. & G.S. SPECIAL PUBLICATION NO. 253. ELEVATIONS ARE BASED ON THE DATUM OF MEAN SEA LEVEL.
 REFERENCE BENCH MARK IS A U.S.C. & G.S. BRONZE DISK STAMPED M480, 1981 LOCATED 0.8 MILES NORTH ALONG SHONLINE HWY. FROM THE POST OFFICE IN BOLINAS AT A BRIDGE OVER PINE GULCH CREEK IN THE TOP OF THE SOUTHWEST VERTICAL APPROX. 400 FEET NORTH OF BOLINAS UNION SCHOOL. ELEVATION IS 18.03 FEET M.S.L.
 CONTOUR INTERVAL IS 1 FEET

- △ SUSCOL
- × BM 5457 235.87'
- 99+12.33
- 56.2 (Field)
- 23.5 (Plotted)
- FIRST ST.
- TRAIL
- SIDEWALK (Small scale drawing) (Drawn to scale)
- RAILROADS
- WALL
- FENCE
- GUARD RAILING
- BUILDINGS
- FOUNDATIONS, SLABS, PARKING AREA, PAVES
- CULVERT, BRIDGE

LEGEND

- POWER LINE
- POWER LINE (TOWER BASE TO SCALE)
- PIPE
- PIPE LINE LABEL WATER, OIL, ETC., IF KNOWN
- AREAS SUCH AS DAMPS, MUD FLATS, EXCAVATIONS, ETC.
- WATER SURFACE—STREAM, LAKE, POND
- TANK
- UTILITY POLE
- STREET LIGHT
- MANHOLE
- FLAGPOLE, STANDPIPE, STACK, ETC.
- MONUMENTED CONTROL POINT
- BENCH MARK
- TRAVERSE STATION (NOT MONUMENTED)
- SPOT ELEVATIONS (DECIMAL POINT INDICATES POSITION)
- PAVED ROAD
- UNPAVED, PRIVATE OR UNIMPROVED ROAD
- TRAIL
- SIDEWALK (Small scale drawing) (Drawn to scale)
- RAILROADS
- WALL—RETAINING WALL, SEAWALL, ETC.
- FENCE
- GUARD RAILING
- BUILDINGS
- FOUNDATIONS, SLABS, PARKING AREA, PAVES
- CULVERT, BRIDGE
- FIRE HYDRANT
- CATCH BASIN
- TREE OR BRUSH COVER
- PRINCIPAL POINT



	2
3	4
5	6
7	8
9	10
11	12
13	14
15	16
17	
18	
19	
20	

SHEET INDEX



SYMBOL	DESCRIPTION	DATE	APPROVAL
REVISIONS			
tomill, inc.		U. S. ARMY ENGINEER DISTRICT, SAN FRANCISCO CORPS OF ENGINEERS SAN FRANCISCO, CALIFORNIA	
DRAWN BY:	MARIN COUNTY	CALIFORNIA	
TRACED BY:	BOLINAS LAGOON		
CHECKED BY:	TOPOGRAPHY		
SUBMITTED:			
APPROVAL RECOMMENDED:	APPROVED:	DATE:	
CHIEF, RESURVEY BRANCH	CHIEF, ENGINEERING BRANCH		
PREPARED UNDER THE DIRECTION OF JOHN M. ADSIT COLONEL, C.E., DISTRICT ENGINEER			
		SCALE: 1" = 100'	JOB NO.
		DRAWING NUMBER	
		SHEET 4 OF 20	



NOTES:
 SURVEYED BY TOWILL INC. FOR THE CORPS OF ENGINEERS.
 BASE MAPS WERE COMPILED BY PHOTOGRAMMETRIC METHODS FROM AERIAL PHOTOGRAPHY FLOWN 18 SEPT. 1978
 PLANE GRID BEARINGS AND COORDINATES ARE BASED ON THE STATE OF CALIFORNIA COORDINATE SYSTEM (LAMBERT CONFORMAL PROJECTION), ZONE 3 CALIFORNIA, AS DESCRIBED IN U.S.C. & G.S. SPECIAL PUBLICATION NO. 253. ELEVATIONS ARE BASED ON THE DATUM OF MEAN SEA LEVEL.
 REFERENCE BENCH MARK IS A U.S.C. & G.S. BRONZE DISK STAMPED M480, 1951 LOCATED 0.8 MILES NORTH ALONG SHORELINE HWY. FROM THE POST OFFICE IN BOLINAS AT A BRIDGE OVER PINE GULCH CREEK IN THE TOP OF THE SOUTHWEST RINKWALL, APPROX. 400 FEET NORTH OF BOLINAS UNION SCHOOL. ELEVATION IS 15.03 FEET M.S.L.
 CONTOUR INTERVAL IS 2 FEET

- △ SUSCOL MONUMENTED CONTROL POINT
- × BM 5457 BENCH MARK
- o 99+12.33 TRAVERSE STATION (NOT MONUMENTED)
- 56.7 (Field) SPOT ELEVATIONS (DECIMAL POINT INDICATES POSITION)
- 23.5 (Plotted)
- FIRST ST. PAVED ROAD
- UNPAVED, PRIVATE OR UNIMPROVED ROAD
- TRAIL
- SIDEWALK (Small scale drawing)
- RAILROADS (Drawn to scale)
- WALL WALLS-RETAINING WALL, SEAWALL, ETC.
- FENCE
- GUARD RAILING
- BUILDINGS
- FOUNDATIONS, SLABS, PARKING AREA, RENS
- (Label) CULVERT, BRIDGE

LEGEND

- POWER LINE
- POWER LINE (TOWER BASE TO SCALE)
- PIPE PIPE LINE (LABEL WATER, OIL, ETC., IF KNOWN)
- AREAS SUCH AS DUMPS, MUD FLATS, EXCAVATIONS, ETC.
- WATER SURFACE-STREAM, LAKE, POND
- TANK
- FIRE HYDRANT
- UTILITY POLE
- CATCH BASIN
- STREET LIGHT
- TREE OR BRUSH COVER
- MANHOLE
- FLAGPOLE, STANDPIPE, STACK, ETC.
- PRINCIPAL POINT

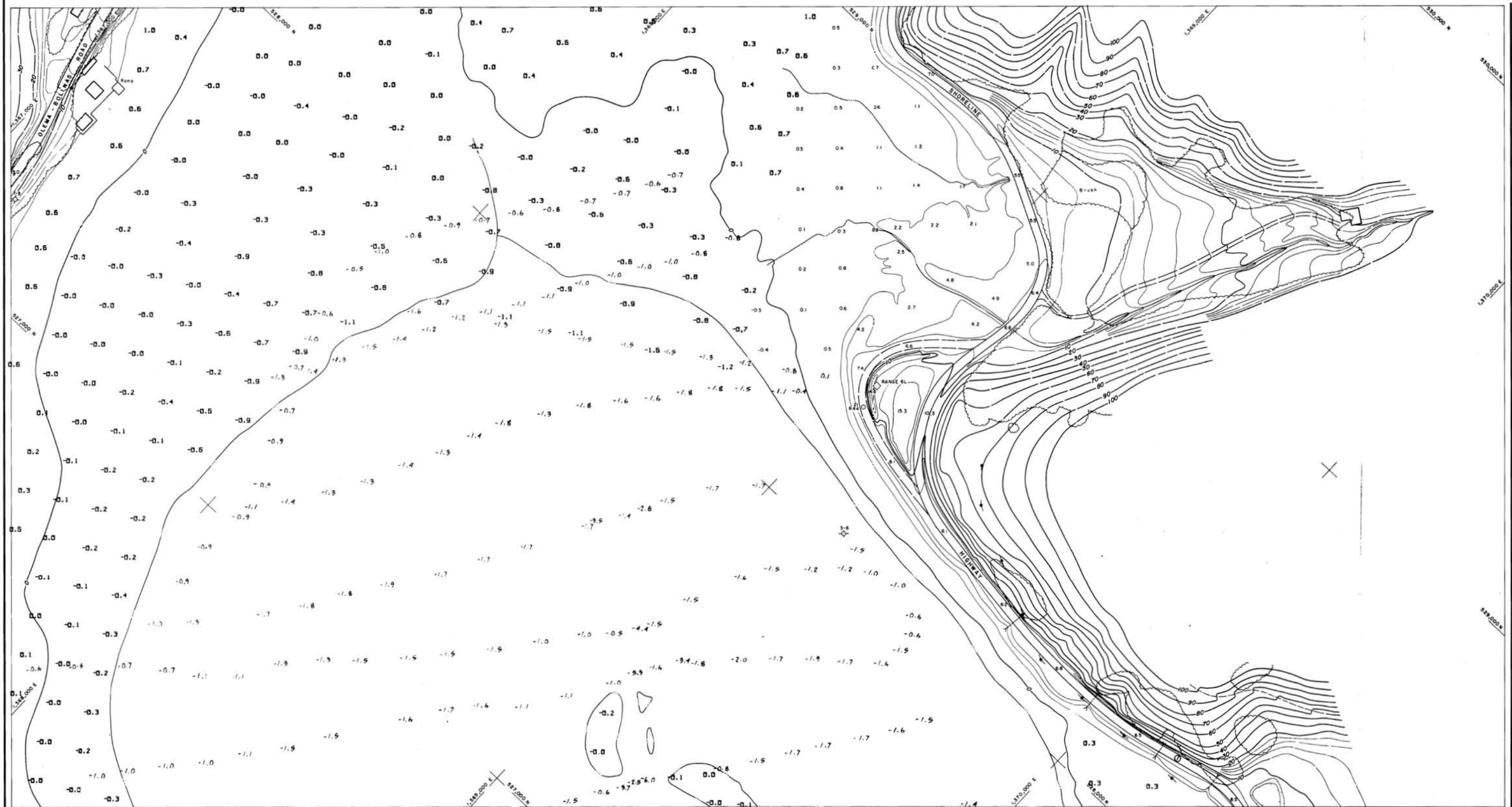


3	4
5	6
7	8
9	10
11	12
13	14
15	16
17	
18	
19	
20	

SHEET INDEX



SYMBOL		DESCRIPTION		DATE	APPROVAL
REVISIONS					
Towill, Inc.		U. S. ARMY ENGINEER DISTRICT, SAN FRANCISCO CORPS OF ENGINEERS SAN FRANCISCO, CALIFORNIA			
DRAWN BY:		MARIN COUNTY		CALIFORNIA	
TRACED BY:		BOLINAS LAGOON			
CHECKED BY:		TOPOGRAPHY			
SUBMITTED:					
APPROVAL RECOMMENDED:		APPROVED:		DATE:	
CHIEF, DESIGN & ESTIMATE DIVISION		CHIEF, SURVEYING DIVISION			
PREPARED UNDER THE DIRECTION OF JOHN M. ADST COLONEL, C.E. DISTRICT ENGINEER		SCALE: 1" = 100'		JOB NO.	
		DRAWING NUMBER			
		SHEET 5 OF 20			



NOTES:
 SURVEYED BY TOMILL INC. FOR THE CORPS OF ENGINEERS.
 BASE MAPS WERE COMPILED BY PHOTOGRAMMETRIC METHODS FROM AERIAL PHOTOGRAPHY FLOWN IN SEPT. 1978.
 PLANE GRID BEARINGS AND COORDINATES ARE BASED ON THE STATE OF CALIFORNIA COORDINATE SYSTEM (LAMBERT CONFORMAL PROJECTION), ZONE 3 CALIFORNIA, AS DESCRIBED IN U.S.C. & G.S. SPECIAL PUBLICATION NO. 263. ELEVATIONS ARE BASED ON THE DATUM OF MEAN SEA LEVEL.
 REFERENCE BENCH MARK IS A U.S.C. & G.S. BRONZE DISK STAMPED MAR. 1951 LOCATED 0.3 MILES NORTH ALONG SHORELINE HWY. FROM THE POST OFFICE IN BOLINAS AT A BRIDGE OVER PINE GULCH CREEK IN THE TOP OF THE SOUTHWEST WINDY WALL, APPROX. 100 FEET NORTH OF BOLINAS UNION SCHOOL. ELEVATION IS 15.03 FEET M.S.L.
 CONTOUR INTERVAL IS 2 FEET

- △ SUSCOL
- ⊗ BM 235 87
- 99+12.33
- (Field)
- (Plate)
- 23.5 (Plate)
- FIRST ST.
- UNPAVED, PRIVATE OR UNIMPROVED ROAD
- TRAIL
- SIDEWALK (Small scale drawing)
- RAILROADS (Drawn to scale)
- WALL
- WALLS-RETAINING WALL, SEAWALL, ETC.
- FENCE
- GUARD RAILING
- BUILDINGS
- FOUNDATIONS, SLABS, PARKING AREA, RUBS
- CULVERT, BRIDGE

LEGEND

- POWER LINE
- POWER LINE (TOWER BASE TO SCALE)
- PIPE
- PIPE LINE LABEL, WATER, OIL, ETC., IF KNOWN
- AREAS SUCH AS DAMPS, MUD FLATS, EXCAVATIONS, ETC.
- WATER SURFACE-STREAM, LAKE, POND
- TANK
- FIRE HYDRANT
- UTILITY POLE
- CATCH BASIN
- STREET LIGHT
- TREE OR BRUSH COVER
- MANHOLE
- FLAGPOLE, STANDPIPE, STACK, ETC.
- PRINCIPAL POINT

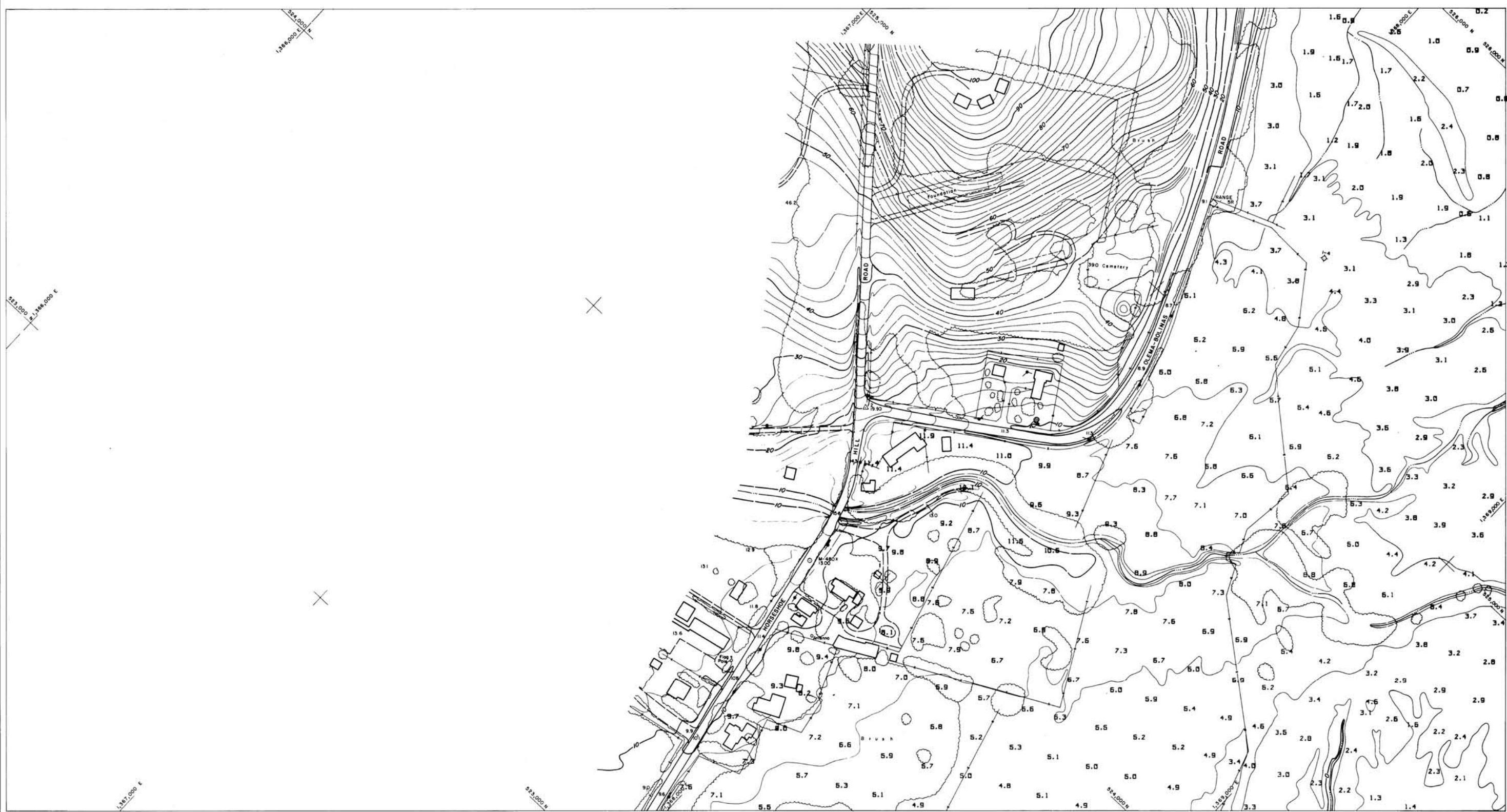


3	4
5	6
7	8
9	10
11	12
13	14
15	16
17	
18	
19	
20	

SHEET INDEX



SYMBOL	DESCRIPTION	DATE	APPROVAL
REVISIONS			
Tomill, Inc. <small>100 HUNTER STREET SAN FRANCISCO CALIFORNIA 94102</small>		U. S. ARMY ENGINEER DISTRICT, SAN FRANCISCO CORPS OF ENGINEERS SAN FRANCISCO, CALIFORNIA	
DRAWN BY:	MARIN COUNTY	CALIFORNIA	
TRACED BY:	BOLINAS LAGOON		
CHECKED BY:	TOPOGRAPHY		
SUBMITTED:			
APPROVAL RECOMMENDED:	APPROVED:	DATE:	
CHIEF, DESIGN FILE BRANCH	CHIEF, ENGINEERING DIVISION	SCALE: 1" = 100'	
PREPARED UNDER THE DIRECTION OF JOHN M. ADST COLONEL, C.E., DISTRICT ENGINEER		JOB NO. DRAWING NUMBER	
		SHEET 6 OF 20	



NOTES:
 SURVEYED BY TOWILL INC. FOR THE CORPS OF ENGINEERS.
 BASE MAPS WERE COMPILED BY PHOTOGRAMMETRIC METHODS FROM AERIAL PHOTOGRAPHY FLOWN 18 SEPT. 1978.
 PLANE GRID BEARINGS AND COORDINATES ARE BASED ON THE STATE OF CALIFORNIA COORDINATE SYSTEM (LAMBERT CONFORMAL PROJECTION), ZONE 3 CALIFORNIA AS DESCRIBED IN U.S.C. & G.S. SPECIAL PUBLICATION NO. 253. ELEVATIONS ARE BASED ON THE DATUM OF MEAN SEA LEVEL.
 REFERENCE BENCH MARK IS A U.S.C. & G.S. BRONZE DISK STAMPED M490 1951 LOCATED 0.9 MILES NORTH ALONG SHORELINE HWY. FROM THE POST OFFICE IN BOLINAS AT A BRIDGE OVER PINE GLAUGH CREEK IN THE TOP OF THE SOUTHWEST CORNER. APPROX. 400 FEET NORTH OF BOLINAS UNION SCHOOL. ELEVATION IS 16.03 FEET M.S.L.
 CONTOUR INTERVAL IS 2 FEET

- △ SUSCOL
- × BM 2457 235.67
- 99+12.35
- 56.2 (Field)
- 23.5 (Plotted)
- FIRST ST.
- PAVED ROAD
- UNPAVED PRIVATE OR UNIMPROVED ROAD
- TRAIL
- SIDEWALK (Small scale drawing)
- RAILROADS (Drawn to scale)
- WALL
- WALLS-RETAINING WALL, SEAWALL, ETC.
- FENCE
- GUARD RAILING
- BUILDINGS
- FOUNDATIONS, SLABS, PARKING AREA, RUMS
- CULVERT, BRIDGE

LEGEND

- +—+— POWER LINE
- +—+— POWER LINE (TOWER BASE TO SCALE)
- PIPE
- PIPE LINE LABEL WATER, OIL, ETC., IF KNOWN
- (Lobd)
- AREAS SUCH AS DUMPS, MUD FLATS, EXCAVATIONS, ETC.
- W
- WATER SURFACE-STREAM, LAKE, POND
- TANK
- FIRE HYDRANT
- UTILITY POLE
- CATCH BASIN
- STREET LIGHT
- TREE OR BRUSH COVER
- MANHOLE
- FLAGPOLE, STANDPIPE, STACK, ETC.
- PRINCIPAL POINT

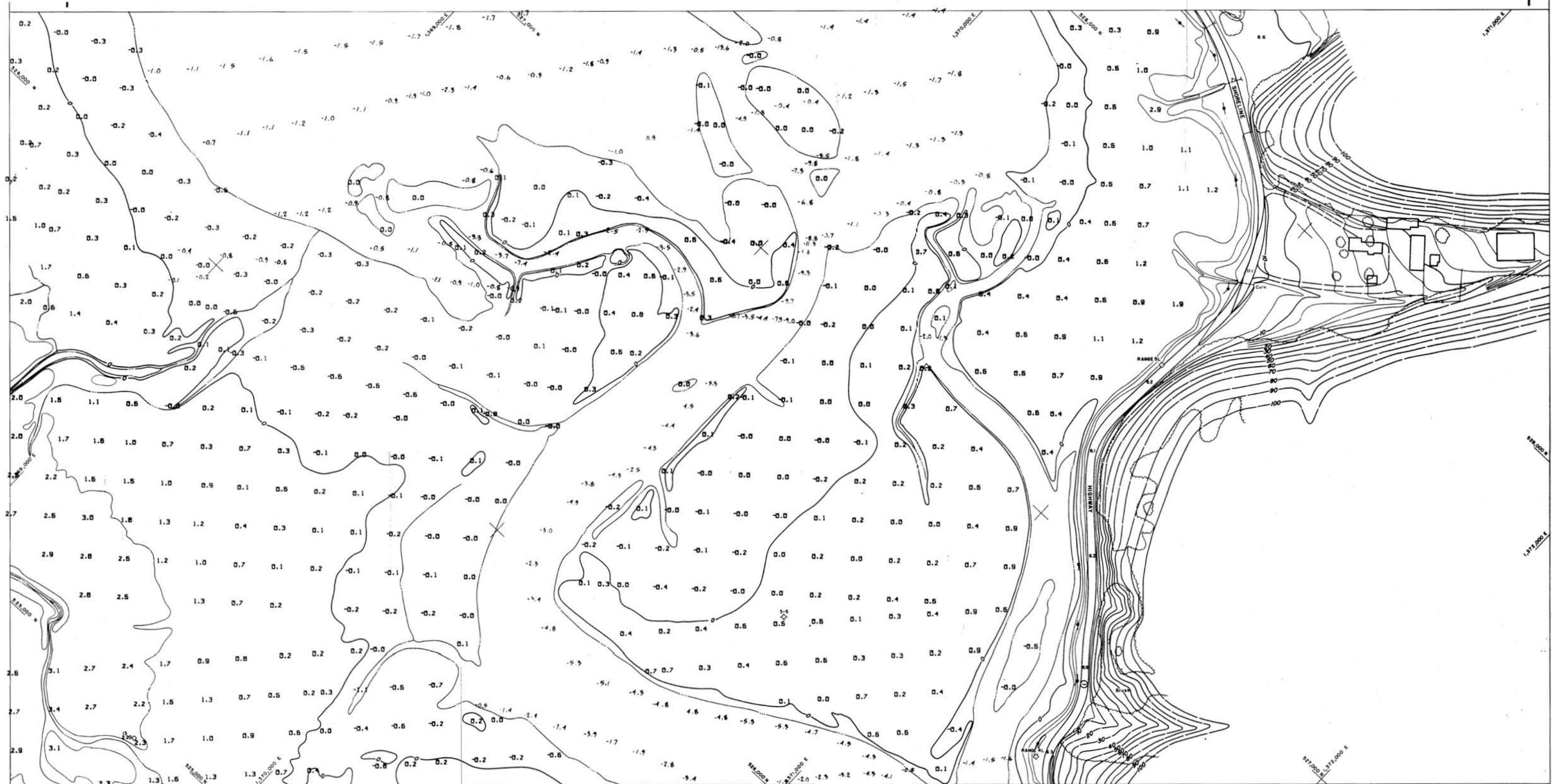


2
3 4
5 6
7 8
9 10
11 12
13 14
15 16
17
18
19
20

SHEET INDEX



SYMBOL	DESCRIPTION	DATE	APPROVAL
REVISIONS			
Towill, Inc.		U. S. ARMY ENGINEER DISTRICT, SAN FRANCISCO CORPS OF ENGINEERS SAN FRANCISCO, CALIFORNIA	
DRAWN BY:	MARIN COUNTY	CALIFORNIA	
TRACED BY:	BOLINAS LAGOON		
CHECKED BY:	TOPOGRAPHY		
SUBMITTED:			
APPROVAL RECOMMENDED:	APPROVED:	DATE:	
CHIEF, DESIGN AND BRANCH	CHIEF, ENGINEERING DIVISION		
PREPARED UNDER THE DIRECTION OF JOHN M. ADSIT COLONEL, C.E., DISTRICT ENGINEER		SCALE: 1" = 100'	JOB NO.
		DRAWING NUMBER	
		SHEET 7 OF 20	



NOTES:
 SURVEYED BY TOWILL INC. FOR THE CORPS OF ENGINEERS.
 BASE MAPS WERE COMPILED BY PHOTOGRAMMETRIC METHODS FROM AERIAL PHOTOGRAPHY PLANS 14 SEP, 1978.
 PLANE GRID BEARINGS AND COORDINATES ARE BASED ON THE STATE OF CALIFORNIA COORDINATE SYSTEM (LAMBERT CONFORMAL PROJECTION), ZONE 3 CALIFORNIA, AS DESCRIBED IN U.S.C. & G.S. SPECIAL PUBLICATION NO. 255.
 ELEVATIONS ARE BASED ON THE DATUM OF MEAN SEA LEVEL.
 REFERENCE BENCH MARK IS A U.S.C. & G.S. BRONZE DISK STAMPED 1480, 1951 LOCATED 0.8 MILES NORTH ALONG BAYVIEW HWY. FROM THE POST OFFICE IN BOLINAS AT A BRIDGE OVER PINE BLANCH CREEK IN THE TOP OF THE SOUTHWEST CORNER OF APPROX. 400 FEET NORTH OF BOLINAS UNION SCHOOL. ELEVATION IS 16.00 FEET M.S.L.
 CONTOUR INTERVAL IS 2 FEET

- LEGEND**
- △ SUSCOL
 - × BM 5457
 - 99+12.33
 - 26.2 (Fish)
 - 23.5 (Pillar)
 - FIRST ST.
 - UNPAVED, PRIVATE OR UNIMPROVED ROAD
 - TRAIL
 - SIDEWALK (Small scale drawing)
 - RAILROADS (Drawn to scale)
 - WALL
 - FENCE
 - GUARD RAILING
 - BUILDINGS
 - FOUNDATIONS, SLABS, PARKING AREA, PAVES
 - OILYERT, BRIDGE
 - △ MONUMENTED CONTROL POINT
 - × BENCH MARK
 - TRAVERSE STATION (NOT MONUMENTED)
 - SPOT ELEVATIONS (DECIMAL POINT INDICATES POSITION)
 - PAVED ROAD
 - UNPAVED, PRIVATE OR UNIMPROVED ROAD
 - TRAIL
 - SIDEWALK (Small scale drawing)
 - RAILROADS (Drawn to scale)
 - WALL
 - FENCE
 - GUARD RAILING
 - BUILDINGS
 - FOUNDATIONS, SLABS, PARKING AREA, PAVES
 - OILYERT, BRIDGE

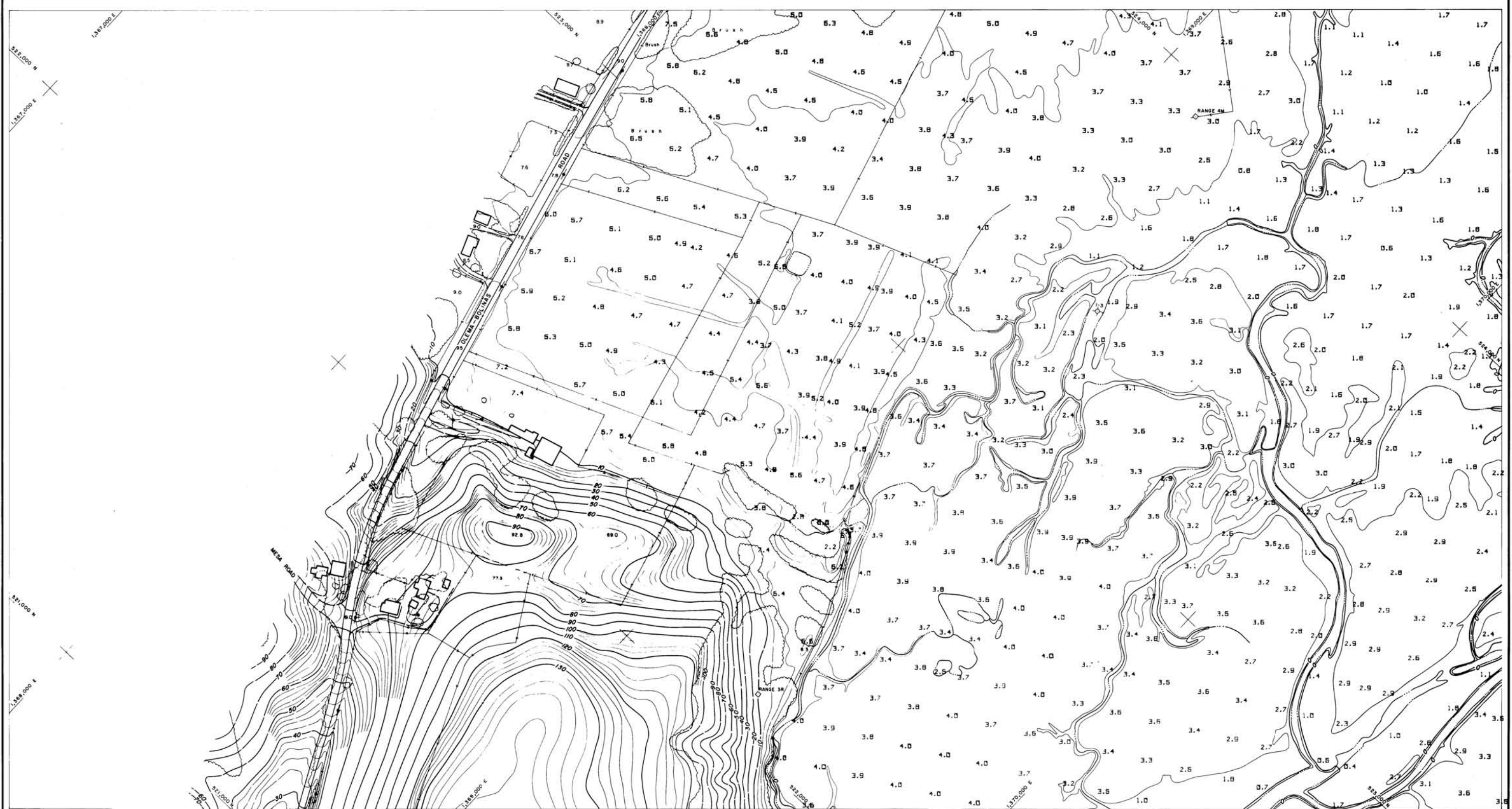
- POWER LINE
- POWER LINE (TOWER BASE TO SCALE)
- PIPE
- PIPE LINE LABEL WATER, OIL, ETC., IF KNOWN
- AREAS SUCH AS DUMPS, MUD PLATS, EXCAVATIONS, ETC.
- WATER SURFACE—STREAM, LAKE, POND
- TANK
- UTILITY POLE
- STREET LIGHT
- MANHOLE
- FLAGPOLE, STANDPIPE, STACK, ETC.
- PRINCIPAL POINT
- FIRE HYDRANT
- GATCH BARN
- TREE OR BRUSH COVER



2
3
4
5
6
7
8
9
10
11
12
13
14
15
16
17
18
19
20



SYMBOL	DESCRIPTION	DATE	APPROVAL
REVISIONS			
TOWILL INC.		U. S. ARMY ENGINEER DISTRICT, SAN FRANCISCO CORPS OF ENGINEERS SAN FRANCISCO, CALIFORNIA	
DRAWN BY:	MARIN COUNTY	CALIFORNIA	
CHECKED BY:	BOLINAS LAGOON		
SUBMITTED:	TOPOGRAPHY		
APPROVAL RECOMMENDED:	APPROVED:	DATE:	
PREPARED UNDER THE DIRECTION OF JOHN M. ADAM		SCALE: 1" = 100'	DATE:
COLONEL, C.E., DISTRICT ENGINEER		DRAWING NUMBER	
		SHEET 8	OF 20



NOTES:
 SURVEYED BY TOWILL INC. FOR THE CORPS OF ENGINEERS.
 BASE MAPS WERE COMPILED BY PHOTOGRAMMETRIC METHODS FROM AERIAL PHOTOGRAPHY FLOWN 18 SEPT. 1976.
 PLANE GRID BEARINGS AND COORDINATES ARE BASED ON THE STATE OF CALIFORNIA COORDINATE SYSTEM (LAMBERT CONFORMAL PROJECTION), ZONE 3 CALIFORNIA, AS DESCRIBED IN U.S.C. & G.S. SPECIAL PUBLICATION NO. 253. ELEVATIONS ARE BASED ON THE DATUM OF MEAN SEA LEVEL.
 REFERENCE BENCH MARK IS A U.S.C. & G.S. BRONZE DISK STAMPED M893 1951 LOCATED 0.9 MILES NORTH ALONG SHORELINE HWY. FROM THE POST OFFICE IN BOLINAS. AT A BRIDGE OVER PINE GLACH CREEK IN THE TOP OF THE SOUTHWEST WINDFALL. APPROX. 400 FEET NORTH OF BOLINAS UNION SCHOOL. ELEVATION IS 15.03 FEET N.G.V.D.
 CONTOUR INTERVAL IS 2 FEET

- △ SUSCOL
- × BM 5457
235.67
- 99+12.33
- 56.2 (Field)
- 23.5 (Plotted)
- FIRST ST.
- PAVED ROAD
- UNPAVED, PRIVATE OR UNIMPROVED ROAD
- TRAIL
- SIDEWALK
(Small scale drawing)
- RAILROADS
(Drawn to scale)
- WALL
- WALLS-RETAINING WALL, SEAWALL, ETC.
- FENCE
- GUARD RAILING
- BUILDINGS
- FOUNDATIONS, SLABS, PARKING AREA, RIMS
- CLVERT, BRIDGE

LEGEND

- MONUMENTED CONTROL POINT
- BENCH MARK
- TRAVERSE STATION (NOT MONUMENTED)
- SPOT ELEVATIONS (DECIMAL POINT INDICATES POSITION)
- PAVED ROAD
- UNPAVED, PRIVATE OR UNIMPROVED ROAD
- TRAIL
- SIDEWALK
(Small scale drawing)
- RAILROADS
(Drawn to scale)
- WALL
- WALLS-RETAINING WALL, SEAWALL, ETC.
- FENCE
- GUARD RAILING
- BUILDINGS
- FOUNDATIONS, SLABS, PARKING AREA, RIMS
- CLVERT, BRIDGE
- POWER LINE
- POWER LINE (TOWER BASE TO SCALED)
- PIPE
- PIPE LINE (LABEL WATER, OIL, ETC., IF KNOWN)
- AREAS SUCH AS DAMPS, MUD FLATS, EXCAVATIONS, ETC.
- WATER SURFACE-STREAM, LAKE, POND
- TANK
- FIRE HYDRANT
- UTILITY POLE
- CATCH BASIN
- STREET LIGHT
- TREE OR BRUSH COVER
- MANHOLE
- FLAGPOLE, STANDPIPE, STACK, ETC.
- PRINCIPAL POINT

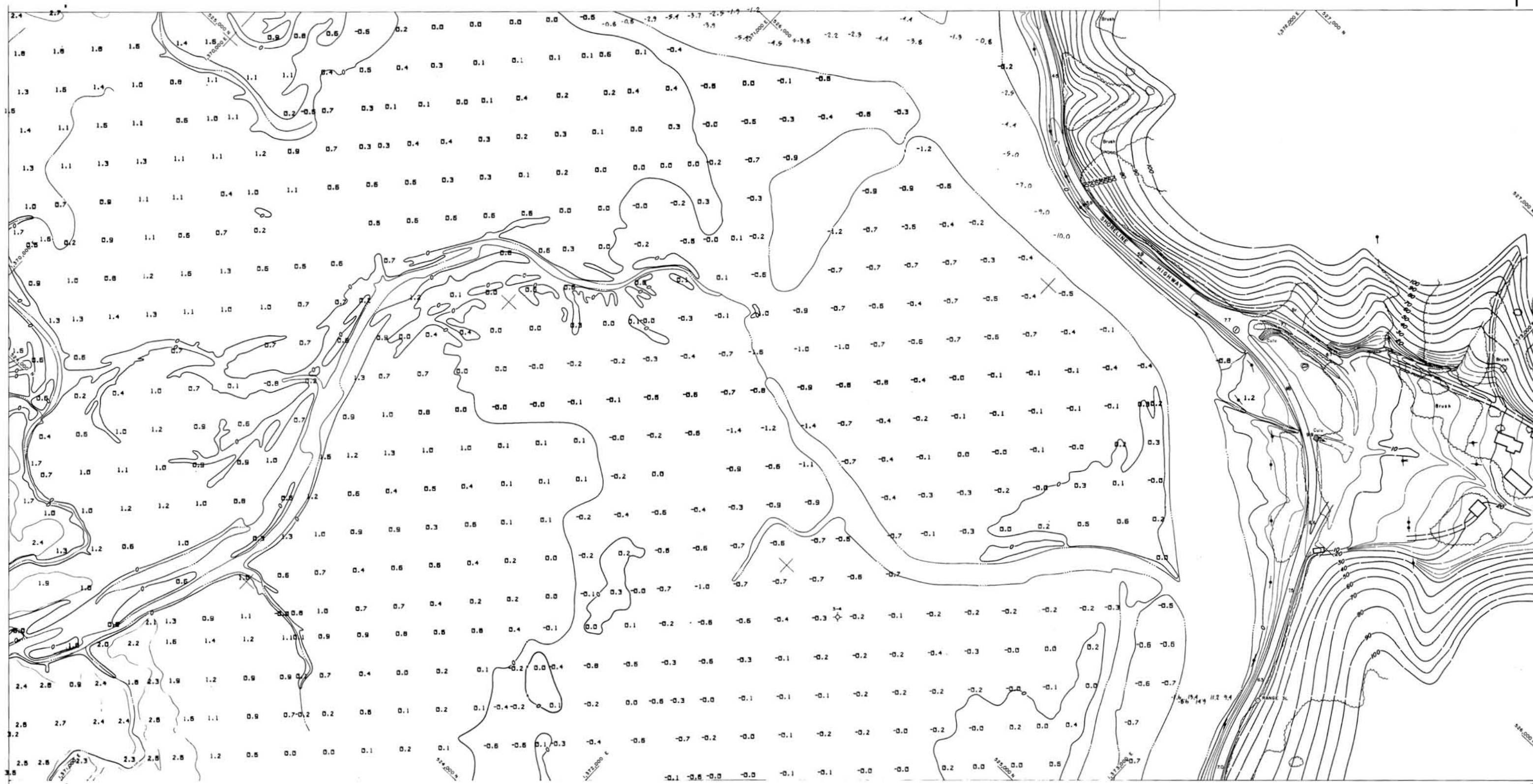


2
3
4
5
6
7
8
9
10
11
12
13
14
15
16
17
18
19
20

SHEET INDEX



SYMBOL	DESCRIPTION	DATE	APPROVAL
REVISIONS			
towill, inc. <small>100 HOBART STREET, SAN FRANCISCO, CALIFORNIA 94102</small>		U. S. ARMY ENGINEER DISTRICT, SAN FRANCISCO CORPS OF ENGINEERS SAN FRANCISCO, CALIFORNIA	
DRAWN BY:	MARIN COUNTY	CALIFORNIA	
TRACED BY:	BOLINAS LAGOON		
CHECKED BY:	TOPOGRAPHY		
SUBMITTED:			
APPROVAL RECOMMENDED:	APPROVED:	DATE:	
<small>CHIEF, DESIGN FAX BRANCH</small>		<small>CHIEF, ENGINEERING DIVISION</small>	
PREPARED UNDER THE DIRECTION OF			
JOHN M. ADIST			
COLONEL, C.E., DISTRICT ENGINEER			
SCALE: 1" = 100'		JOB NO.	
DRAWING NUMBER		SHEET 9 OF 20	



NOTES
 SURVEYED BY TOWILL INC. FOR THE CORPS OF ENGINEERS.
 BASE MAPS WERE COMPILED BY PHOTOGRAMMETRIC METHODS FROM AERIAL PHOTOGRAPHY FLOWN IN SEPT. 1973.
 PLANE GRID BEARINGS AND COORDINATES ARE BASED ON THE STATE OF CALIFORNIA COORDINATE SYSTEM (LAMBERT CONFORMAL PROJECTION), ZONE 3 CALIFORNIA, AS DESCRIBED IN U.S.C. & G.S. SPECIAL PUBLICATION NO. 288.
 ELEVATIONS ARE BASED ON THE DATUM OF MEAN SEA LEVEL.
 REFERENCE BENCH MARK IS A U.S.C. & G.S. BRONZE DISK STAMPED 1480, 1881 LOCATED 0.8 MILES NORTH ALONG SHORELINE HWY. FROM THE POST OFFICE IN BOLINAS AT A BRIDGE OVER PINE GULCH CREEK IN THE TOP OF THE SOUTHWEST WINDFALL, APPROX. 400 FEET NORTH OF BOLINAS UNION SCHOOL. ELEVATION IS 16.00 FEET M.S.L.
 CONTOUR INTERVAL IS 2 FEET.

- LEGEND**
- △ SUSCOL
 - × BM 2457
 - 99+12.33
 - 56.2 (Pillar)
 - 23.5 (Pillar)
 - FIRST ST.
 - PAVED ROAD
 - UNPAVED, PRIVATE OR UNIMPROVED ROAD
 - TRAIL
 - SIDEWALK (Small scale drawing)
 - RAILROADS (Drawn to scale)
 - WALL
 - FENCE
 - GUARD RAILING
 - BUILDINGS
 - FOUNDATIONS, SLABS, PARKING AREA, PANS
 - CLAVERT, BRIDGE
 - MONUMENTED CONTROL POINT
 - BENCH MARK
 - TRAVERSE STATION (NOT MONUMENTED)
 - SPOT ELEVATIONS (DECIMAL POINT INDICATES POSITION)
 - PAVED ROAD
 - UNPAVED, PRIVATE OR UNIMPROVED ROAD
 - TRAIL
 - SIDEWALK (Small scale drawing)
 - RAILROADS (Drawn to scale)
 - WALL
 - FENCE
 - GUARD RAILING
 - BUILDINGS
 - FOUNDATIONS, SLABS, PARKING AREA, PANS
 - CLAVERT, BRIDGE

- +—+— POWER LINE
- +—+— POWER LINE (TOWER BASE TO SCALE)
- +—+— PIPE
- +—+— PIPE LINE LABEL WATER, OIL, ETC., IF KNOWN
- +—+— AREA SUCH AS DUMPS, MUD FLATS, EXCAVATIONS, ETC.
- +—+— WATER SURFACE—STREAM, LAKE, POND
- TANK
- UTILITY POLE
- STREET LIGHT
- MANHOLE
- (Label) FLAGPOLE, STANDPIPE, STACK, ETC.
- PRINCIPAL POINT
- FIRE HYDRANT
- CATCH BASIN
- TREE OR BRUSH COVER



2
3
4
5
6
7
8
9
10
11
12
13
14
15
16
17
18
19
20

SHEET INDEX



SYMBOL	DESCRIPTION	DATE	APPROVAL
REVISIONS			
Towill, Inc.		U. S. ARMY ENGINEER DISTRICT, SAN FRANCISCO CORPS OF ENGINEERS SAN FRANCISCO, CALIFORNIA	
DRAWN BY:	MARIN COUNTY	CALIFORNIA	
TRACED BY:	BOLINAS LAGOON		
CHECKED BY:	TOPOGRAPHY		
SUBMITTED:			
APPROVAL RECOMMENDED:	APPROVED:	DATE:	
CHIEF, DESIGN BRANCH	CHIEF, ENGINEERING DIVISION		
PREPARED UNDER THE DIRECTION OF JOHN M. ADIST		SCALE: 1" = 100'	JOB NO.
COLONEL, C.E. DISTRICT ENGINEER		DRAWING NUMBER	
		SHEET 10	OF 20



NOTES:
 SURVEYED BY TOWILL INC. FOR THE CORPS OF ENGINEERS.
 BASE MAPS WERE COMPILED BY PHOTOGRAMMETRIC METHODS FROM AERIAL PHOTOGRAPHY FLOWN 18 SEPT. 1978.
 PLANE GRID BEARINGS AND COORDINATES ARE BASED ON THE STATE OF CALIFORNIA COORDINATE SYSTEM (LAMBERT CONFORMAL PROJECTION), ZONE 3 CALIFORNIA, AS DESCRIBED IN U.S.C. & G.S. SPECIAL PUBLICATION NO. 253.
 ELEVATIONS ARE BASED ON THE DATUM OF MEAN SEA LEVEL.
 REFERENCE BENCH MARK IS A U.S.C. & G.S. BRONZE DISK STAMPED MAR. 1951 LOCATED 0.8 MILES NORTH ALONG SHORELINE HWY. FROM THE POST OFFICE IN BOLINAS AT A BRIDGE OVER PINE GLACH CREEK IN THE TOP OF THE SOUTHWEST WINDWALL, APPROX. 400 FEET NORTH OF BOLINAS UNION SCHOOL. ELEVATION IS 16.03 FEET 19.0 V.D.
 CONTOUR INTERVAL IS 2 FEET

- LEGEND**
- △ SUSCOL
 - × BM 5457 235.67
 - 99+12.33
 - 16.7 (Pile)
 - 23.5 (Pile)
 - FIRST ST.
 - UNPAVED, PRIVATE OR UNIMPROVED ROAD
 - TRIAL
 - SIDEWALK (Small scale drawing)
 - RAILROADS (Drawn to scale)
 - WALL
 - WALLS-RETAINING WALL, SEAWALL, ETC.
 - FENCE
 - GUARD RAILING
 - BUILDINGS
 - FOUNDATIONS, SLABS, PARKING AREA, PAVES
 - CULVERT, BRIDGE
 - MONUMENTED CONTROL POINT
 - BENCH MARK
 - TRAVERSE STATION (NOT MONUMENTED)
 - SPOT ELEVATIONS (DECIMAL POINT INDICATES POSITION)
 - PAVED ROAD
 - UNPAVED, PRIVATE OR UNIMPROVED ROAD
 - TRIAL
 - SIDEWALK (Small scale drawing)
 - RAILROADS (Drawn to scale)
 - WALL
 - WALLS-RETAINING WALL, SEAWALL, ETC.
 - FENCE
 - GUARD RAILING
 - BUILDINGS
 - FOUNDATIONS, SLABS, PARKING AREA, PAVES
 - CULVERT, BRIDGE
 - POWER LINE
 - POWER LINE (TOWER BASE TO SCALE)
 - PIPE
 - AREAS SUCH AS DUMPS, MUD FLATS, EXCAVATIONS, ETC.
 - WATER SURFACE-STREAM, LAKE, POND
 - TANK
 - UTILITY POLE
 - STREET LIGHT
 - MANHOLE
 - FLAGPOLE, STANDPIPE, STACK, ETC.
 - PRINCIPAL POINT
 - PIPE LINE LABEL WATER, OIL, ETC., IF KNOWN
 - FIRE HYDRANT
 - CATCH BASIN
 - TREE OR BRUSH COVER.

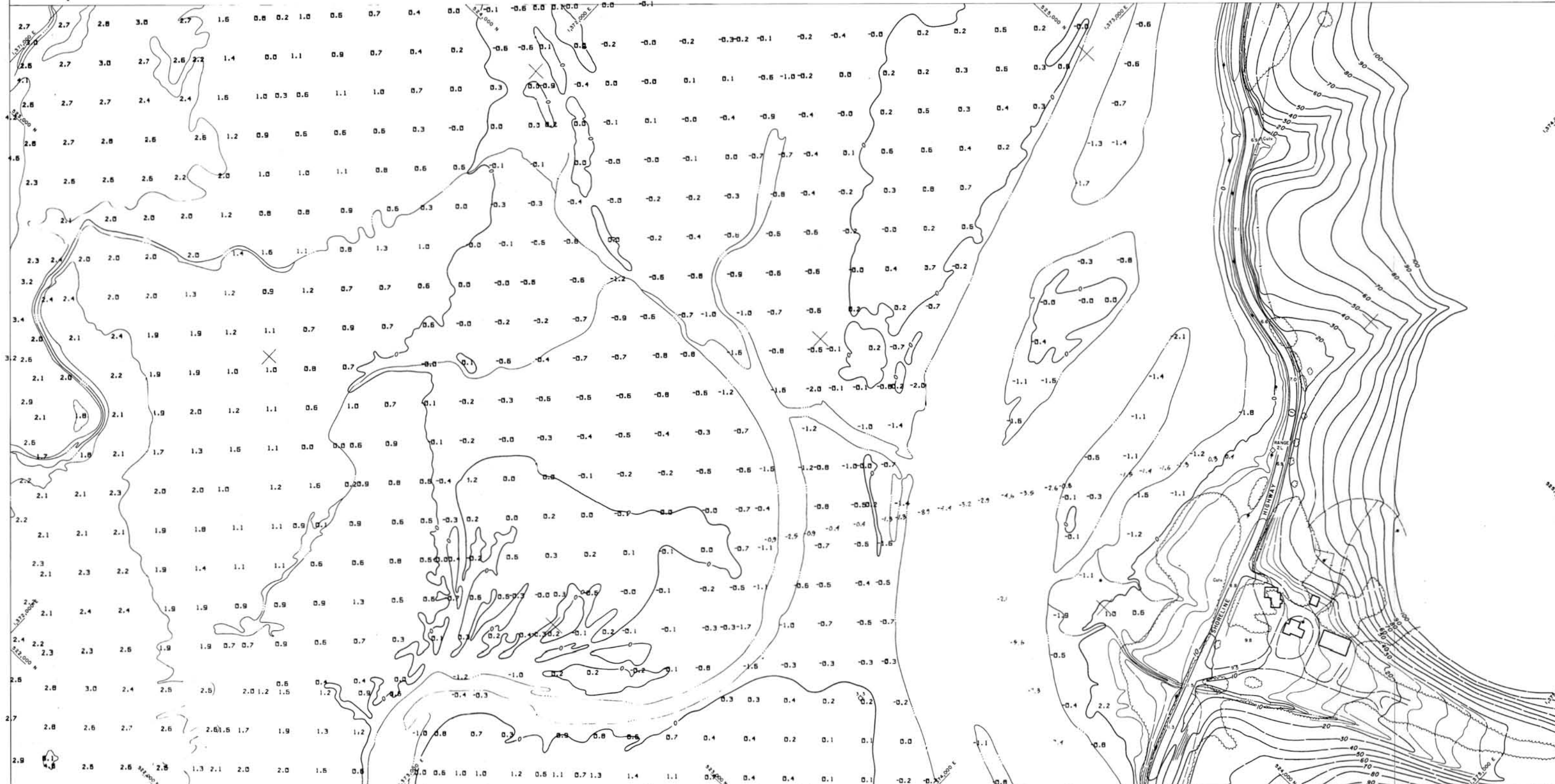


2
3 4
5 6
7 8
9 10
11 12
13 14
15 16
17
18
19
20

SHEET INDEX



SYMBOL	DESCRIPTION	DATE	APPROVAL
REVISIONS			
towill inc.		U. S. ARMY ENGINEER DISTRICT, SAN FRANCISCO CORPS OF ENGINEERS SAN FRANCISCO, CALIFORNIA	
DRAWN BY:	MARIN COUNTY	CALIFORNIA	
TRACED BY:	BOLINAS LAGOON		
CHECKED BY:	TOPOGRAPHY		
SUBMITTED:			
APPROVAL RECOMMENDED:	APPROVED:	DATE:	
CHIEF, DESIGN AND SEARCH	CHIEF, ENGINEERING DIVISION		
PREPARED UNDER THE DIRECTION OF JOHN M. ADST COLONEL, C.E. DISTRICT ENGINEER		SCALE: 1" = 100'	JOB NO.
		DRAWING NUMBER	
		SHEET 11	OF 20



NOTES:
 SURVEYED BY TOWILL INC. FOR THE CORPS OF ENGINEERS.
 BASE MAPS WERE COMPILED BY PHOTOGRAMMETRIC METHODS FROM AERIAL PHOTOGRAPHY FLOWN IN SEPT. 1978.
 PLANE AND BEARING AND COORDINATES ARE BASED ON THE STATE OF CALIFORNIA COORDINATE SYSTEM (LAMBERT CONFORMAL PROJECTION), ZONE 3 CALIFORNIA, AS DESCRIBED IN U.S.C. & G.S. SPECIAL PUBLICATION NO. 285. ELEVATIONS ARE BASED ON THE DATUM OF MEAN SEA LEVEL.
 REFERENCE BENCH MARK IS A U.S.C. & G.S. BRONZE DISK STAMPED 14801 1981 LOCATED 58 MILES NORTH ALONG SHORELINE HWY. FROM THE POST OFFICE IN BOLINAS, AT A BRIDGE OVER PINE GULCH CREEK, IN THE TOP OF THE SOUTHWEST WINGWALL, APPROX. 400 FEET NORTH OF BOLINAS UNION SCHOOL. ELEVATION IS 16.03 FEET N.G.V.D.
 CONTOUR INTERVAL IS 3 FEET

- △ SUBCOL
- × BM 5457 235.87
- 99+12.33
- 56.2 (Field)
- 23.5 (Plater)
- FIRST ST.
- PAVED ROAD
- UNPAVED, PRIVATE OR UNIMPROVED ROAD
- TRAIL
- SIDEWALK (Small scale drawing)
- RAILROADS (Drawn to scale)
- WALL
- WALLS-RETAINING WALL, SEAWALL, ETC.
- FENCE
- GUARD RAILING
- BUILDINGS
- FOUNDATIONS, SLABS, PARKING AREA, RUNS
- CULVERT, BRIDGE

LEGEND

- +—+— POWER LINE
- +—+— POWER LINE (TOWER BASE TO SCALE)
- PIPE
- PIPE LINE LABEL WATER, OIL, ETC. IF KNOWN
- (Label) AREAS SUCH AS DUMPS, MUD FLATS, EXCAVATIONS, ETC.
- W WATER SURFACE-STREAM, LAKE, POND
- TANK
- UTILITY POLE
- STREET LIGHT
- MANHOLE
- (Label) FLAGPOLE, STANDPIPE, STACK, ETC.
- PRINCIPAL POINT
- FIRE HYDRANT
- CATCH BASIN
- TREE OR BRUSH COVER



Difference between
 Lambert and Geodetic
 North of Mon. Wilson
 is 01° 20' 41"

2
3
4
5
6
7
8
9
10
11
12
13
14
15
16
17
18
19
20

SHEET INDEX



SYMBOL	DESCRIPTION	DATE	APPROVAL
REVISIONS			
Towill, Inc.		U. S. ARMY ENGINEER DISTRICT, SAN FRANCISCO	
CORPS OF ENGINEERS		SAN FRANCISCO, CALIFORNIA	
DRAWN BY:	MARIN COUNTY	CALIFORNIA	
TRACED BY:	BOLINAS LAGOON		
CHECKED BY:	TOPOGRAPHY		
SUBMITTED:			
APPROVAL RECOMMENDED:	APPROVED:	DATE:	
CHIEF DESIGNER: <i>[Signature]</i>		CHIEF ENGINEER: <i>[Signature]</i>	
PREPARED UNDER THE DIRECTION OF			
JOHN M. ADIST			
COLONEL, C.E., DISTRICT ENGINEER			
SCALE: 1" = 100'		DRAWING NUMBER	
SHEET 12		OF 20	

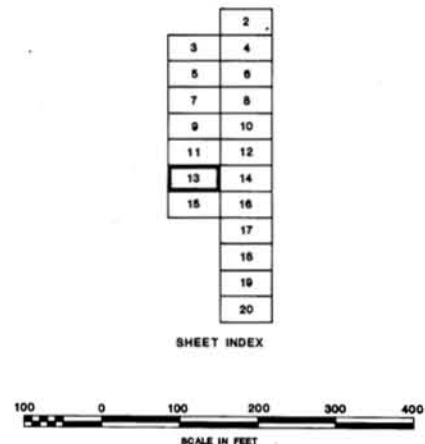


NOTES
 SURVEYED BY TOWILL INC. FOR THE CORPS OF ENGINEERS.
 SAME MAPS WERE COMPILED BY PHOTOGRAMMETRIC METHODS FROM AERIAL PHOTOGRAPHY FLOWN 18 SEPT. 1975.
 PLANE GRID BEARINGS AND COORDINATES ARE BASED ON THE STATE OF CALIFORNIA COORDINATE SYSTEM (LAMBERT CONFORMAL PROJECTION), ZONE 8 CALIFORNIA, AS DESCRIBED IN U.S.G. SPECIAL PUBLICATION NO. 253.
 ELEVATIONS ARE BASED ON THE DATUM OF MEAN SEA LEVEL.
 REFERENCE BENCH MARK IS A U.S.C. & G.S. BRONZE DISK STAMPED 1490, 1951 LOCATED 0.8 MILES NORTH ALONG SHORELINE HWY. FROM THE POST OFFICE IN BOLINAS AT A BRIDGE OVER PINE GULCH CREEK IN THE TOP OF THE SOUTHWEST WINDFALL, APPROX. 400 FEET NORTH OF BOLINAS UNION SCHOOL. ELEVATION IS 18.03 FEET 40.0 V.D.
 CONTOUR INTERVAL IS 2 FEET

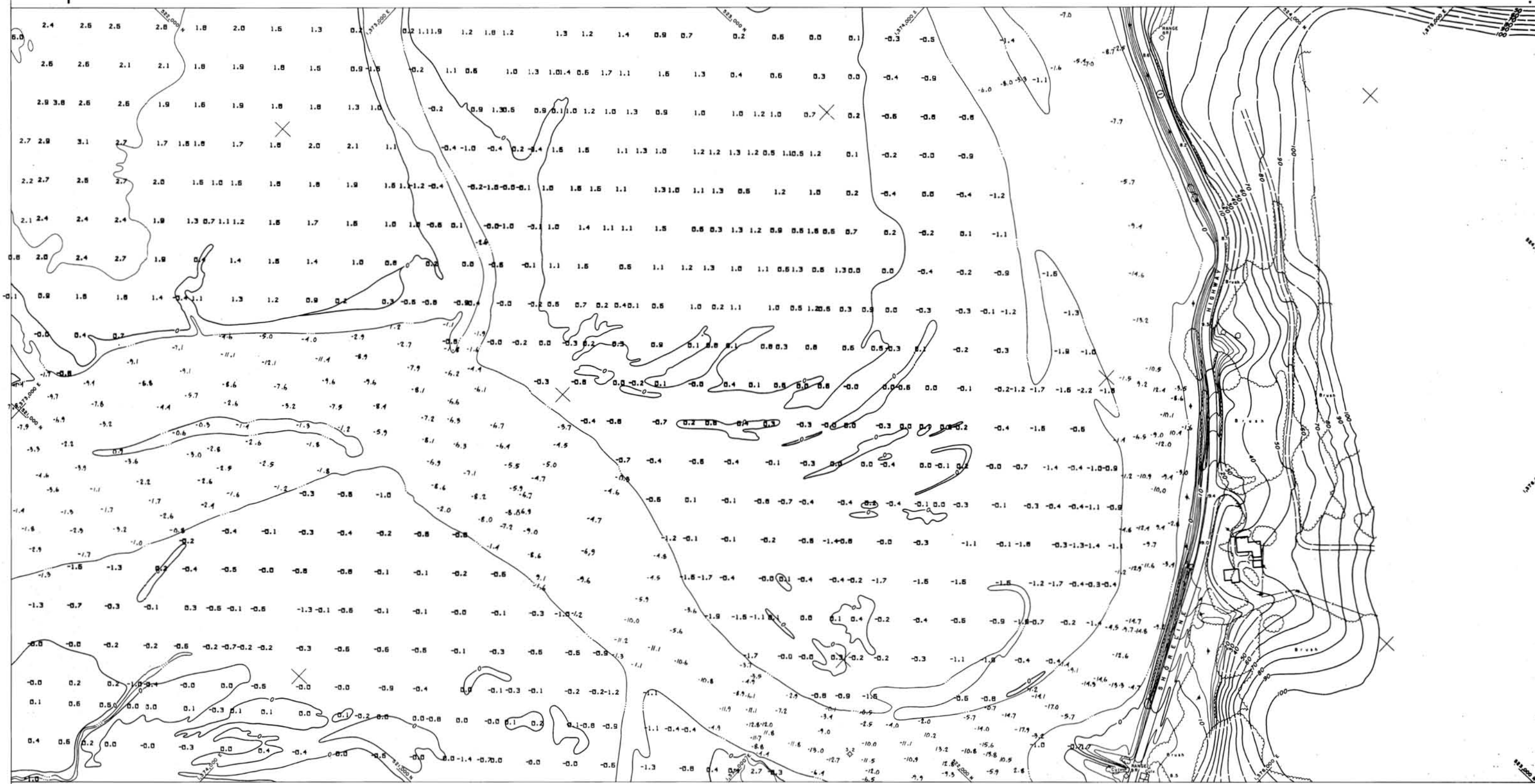
- △ SUSCOL
- × BM 5457 235.67
- 99+12.35
- 56.2 (Field)
- 23.5 (Printer)
- FIRST ST.
- PAVED ROAD
- UNPAVED PRIVATE OR UNIMPROVED ROAD
- TRAIL
- SIDEWALK (Small scale showing)
- RAILROADS (Drawn to scale)
- WALL
- WALLS-RETAINING WALL, SEAWALL, ETC.
- FENCE
- GUARD RAILING
- BUILDINGS
- FOUNDATIONS, SLABS, PARKING AREA, RUMS
- CULVERT, BRIDGE

LEGEND

- POWER LINE
- POWER LINE (TOWER BASE TO SCALE)
- PIPE
- PIPE LINE LABEL WATER, OIL, ETC., IF KNOWN
- AREAS SUCH AS DUMPS, MUD FLATS, EXCAVATIONS, ETC.
- WATER SURFACE-STREAM, LAKE, POND
- TANK
- UTILITY POLE
- STREET LIGHT
- MANHOLE
- (Label) FLAGPOLE, STANDPIPE, STACK, ETC.
- MONUMENTED CONTROL POINT
- BENCH MARK
- TRAVERSE STATION (NOT MONUMENTED)
- SPOT ELEVATIONS (DECIMAL POINT INDICATES POSITION)
- PAVED ROAD
- UNPAVED PRIVATE OR UNIMPROVED ROAD
- TRAIL
- SIDEWALK (Small scale showing)
- RAILROADS (Drawn to scale)
- WALL
- WALLS-RETAINING WALL, SEAWALL, ETC.
- FENCE
- GUARD RAILING
- BUILDINGS
- FOUNDATIONS, SLABS, PARKING AREA, RUMS
- CULVERT, BRIDGE



SYMBOL	DESCRIPTION	DATE	APPROVAL
REVISIONS			
Towill, Inc.		U. S. ARMY ENGINEER DISTRICT, SAN FRANCISCO CORPS OF ENGINEERS SAN FRANCISCO, CALIFORNIA	
DRAWN BY:	MARIN COUNTY	CALIFORNIA	
TRACED BY:	BOLINAS LAGOON		
CHECKED BY:	TOPOGRAPHY		
SUBMITTED:			
APPROVAL RECOMMENDED:	APPROVED:	DATE:	
CHIEF, DESIGN PLAN BRANCH	CHIEF, SUBMITTING OFFICE	SCALE: 1" = 100'	
PREPARED UNDER THE DIRECTION OF JOHN M. ADST COLONEL, C.E. DISTRICT ENGINEER		DRAWING NUMBER	
		SHEET 13 OF 20	



NOTES:
 SURVEYED BY TOMILL, INC. FOR THE CORPS OF ENGINEERS.
 BASE MAPS WERE OBTAINED BY PHOTOGRAMMETRIC METHODS FROM AERIAL PHOTOGRAPHY FLOWN IN SEPT. 1978.
 PLANE GRID BEARINGS AND COORDINATES ARE BASED ON THE STATE OF CALIFORNIA COORDINATE SYSTEM (LAMBERT CONFORMAL PROJECTION), ZONE 5 CALIFORNIA, AS DESCRIBED IN U.S.C. & G.S. SPECIAL PUBLICATION NO. 255. ELEVATIONS ARE BASED ON THE DATUM OF MEAN SEA LEVEL.
 REFERENCE BENCH MARK IS A U.S.C. & G.S. BRONZE DISK STAMPED MAR. 1961 LOCATED 0.8 MILES NORTH ALONG SHORELINE HWY. FROM THE POST OFFICE IN BOLINAS, AT A BRIDGE OVER FINE BULCH CREEK IN THE TOP OF THE SOUTHWEST WINDFALL, APPROX. 400 FEET NORTH OF BOLINAS UNION SCHOOL. ELEVATION IS 16.03 FEET NGVD.
 CONTOUR INTERVAL IS 2 FEET

- △ SUSCOL
- × BM 9457
- 235.67
- 99+12.33
- 56.2 (Field)
- 23.5 (Platter)
- FIRST ST.
- UNPAVED ROAD
- UNPAVED PRIVATE OR UNIMPROVED ROAD
- TRAIL
- BIKEWALK
- RAILROADS
- WALL
- FENCE
- GUARD RAILING
- BUILDINGS
- FOUNDATIONS, SLABS, PARKING AREA, PILING
- GALENT, BRIDGE

LEGEND

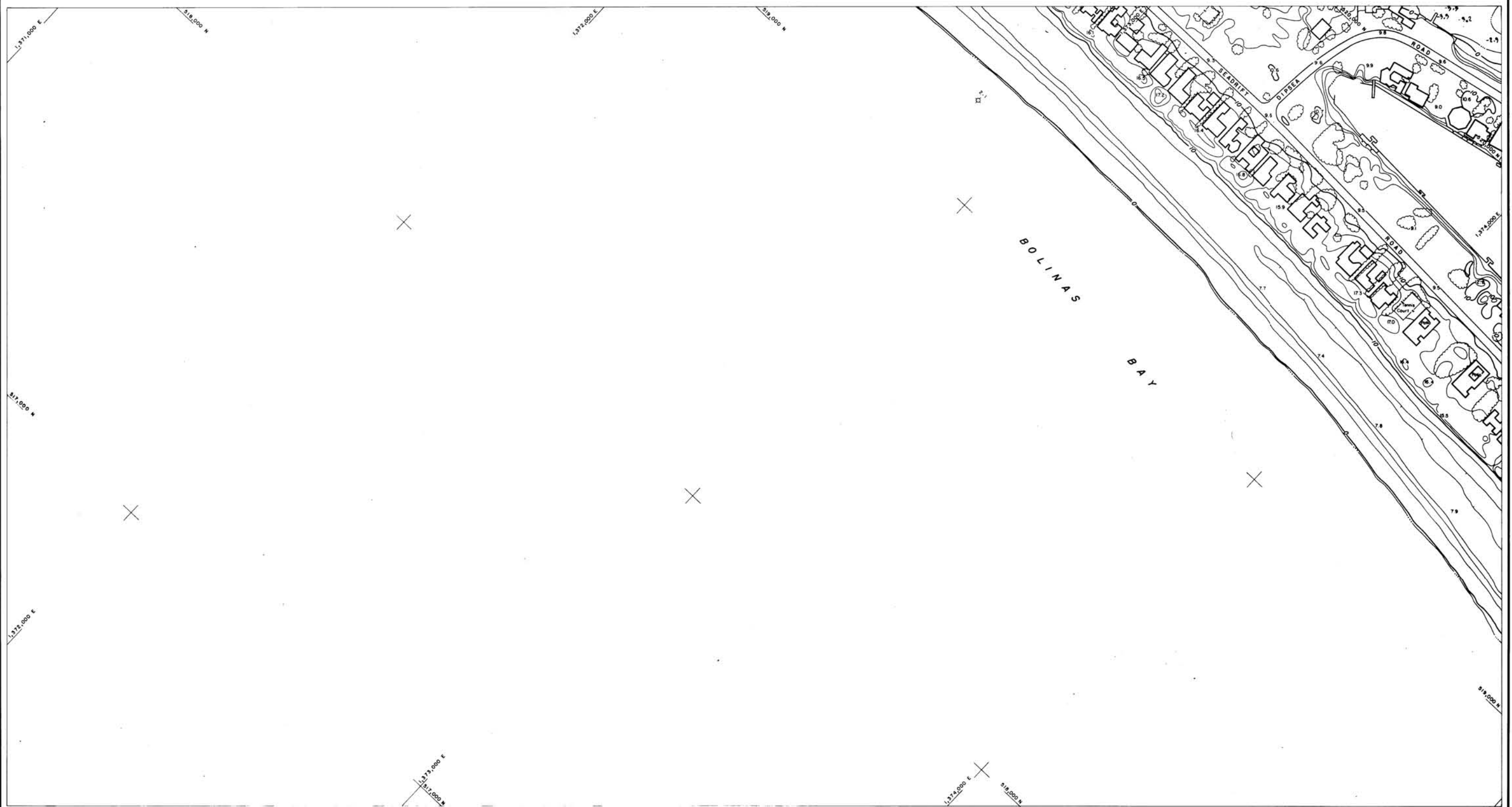
- +—+— POWER LINE
- +—+— POWER LINE (TOWER BASE TO SCALE)
- |—|— PIPE
- (Label) PIPE LINE LABEL, WATER, OIL, ETC., IF KNOWN
- (Label) AREAS SUCH AS DAMPS, MUD FLATS, EXCAVATIONS, ETC.
- (Label) WATER SURFACE-STREAM LAKE, POND
- TANK
- FIRE HYDRANT
- UTILITY POLE
- CATCH BASIN
- STREET LIGHT
- TREE OR BRUSH COVER
- MANHOLE
- (Label) FLAGPOLE, STANDPIPE, STACK, ETC.
- PRINCIPAL POINT



2
3
4
5
6
7
8
9
10
11
12
13
14
15
16
17
18
19
20



SYMBOL		DESCRIPTION	DATE	APPROVAL
REVISIONS				
DRAWN BY:		MARIN COUNTY CALIFORNIA		
TRACED BY:		U. S. ARMY ENGINEER DISTRICT, SAN FRANCISCO CORPS OF ENGINEERS SAN FRANCISCO, CALIFORNIA		
CHECKED BY:		BOLINAS LAGOON		
SUBMITTED:		TOPOGRAPHY		
APPROVAL RECOMMENDED:		APPROVED:	DATE:	
CHIEF, DESIGN TEAM		CHIEF, DISTRICT ENGINEER		JOB NO.
PREPARED UNDER THE DIRECTION OF JOHN M. ADIST COLONEL, C.E., DISTRICT ENGINEER		SCALE: 1" = 100'		DRAWING NUMBER
				SHEET 14 OF 20



NOTES
 SURVEYED BY TOWILL INC. FOR THE CORPS OF ENGINEERS.
 BASE MAPS WERE COMPILED BY PHOTOGRAMMETRIC METHODS FROM AERIAL PHOTOGRAPHY FLOWN 18 SEPT. 1978.
 PLANE GRID BEARINGS AND COORDINATES ARE BASED ON THE STATE OF CALIFORNIA COORDINATE SYSTEM (LAMBERT CONFORMAL PROJECTION), ZONE 3 CALIFORNIA AS DESCRIBED IN U.S.C. & G.S. SPECIAL PUBLICATION NO. 265. ELEVATIONS ARE BASED ON THE DATUM OF MEAN SEA LEVEL.
 REFERENCE BENCH MARK IS A U.S.C. & G.S. BRONZE DISK STAMPED M480, 1951 LOCATED 0.8 MILES NORTH ALONG SHORELINE HWY. FROM THE POST OFFICE IN BOLINAS, AT A BRIDGE OVER PINE GULCH CREEK, IN THE TOP OF THE SOUTHWEST BENCHMALL APPROX. 400 FEET NORTH OF BOLINAS UNION SCHOOL. ELEVATION IS 16.08 FEET N.G.V.D.
 CONTOUR INTERVAL IS 2 FEET

- △ SUSCOL
- × BM 8457
235.67
- 99+12.33
- 56.2 (Field)
- 23.5 (Platter)
- FIRST ST.
- PAVED ROAD
- UNPAVED, PRIVATE OR UNIMPROVED ROAD
- TRAIL
- SIDEWALK
(Small scale drawing)
- RAILROADS
(Drawn to scale)
- WALL
- WALLS-RETAINING WALL, SEAWALL, ETC.
- FENCE
- GUARD RAILING
- BUILDINGS
- FOUNDATIONS, SLABS, PARKING AREA, PAVES
- CLVERT, BRIDGE
- MOMENTED CONTROL POINT
- BENCH MARK
- TRAVERSE STATION (NOT MOMENTED)
- SPOT ELEVATIONS (DECIMAL POINT INDICATES POSITION)
- PAVED ROAD
- UNPAVED, PRIVATE OR UNIMPROVED ROAD
- TRAIL
- SIDEWALK
(Small scale drawing)
- RAILROADS
(Drawn to scale)
- WALL
- WALLS-RETAINING WALL, SEAWALL, ETC.
- FENCE
- GUARD RAILING
- BUILDINGS
- FOUNDATIONS, SLABS, PARKING AREA, PAVES
- CLVERT, BRIDGE

LEGEND

- +—+—+— POWER LINE
- +—+—+—+— POWER LINE (TOWER BASE TO SCALE)
- |—|—|— PIPE
- (Label) PIPE LINE LABEL WATER, OIL, ETC., IF KNOWN
- (Label) AREAS SUCH AS DUMPS, MUD FLATS, EXCAVATIONS, ETC.
- (Label) WATER SURFACE-STREAM, LAKE, POND
- TANK
- FIRE HYDRANT
- UTILITY POLE
- CATCH BASIN
- STREET LIGHT
- TREE OR BRUSH COVER
- MANHOLE
- (Label) FLAGPOLE, STANDPIPE, STACK, ETC.
- PRINCIPAL POINT

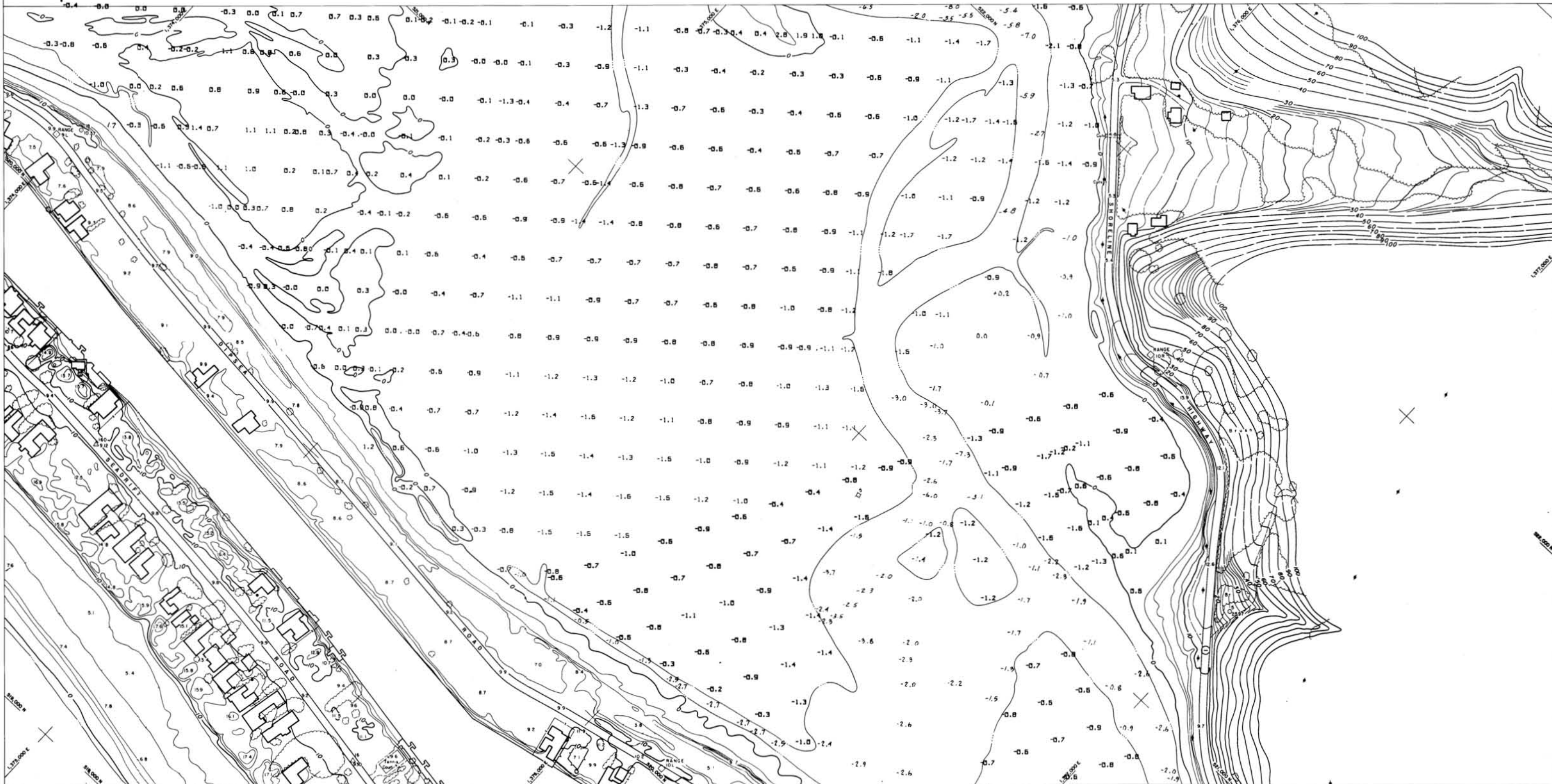


2
3 4
5 6
7 8
9 10
11 12
13 14
15 16
17
18
19
20

SHEET INDEX



SYMBOL	DESCRIPTION	DATE	APPROVAL
REVISIONS			
towill, inc. <small>400 HUNTER STREET SAN FRANCISCO CALIFORNIA 94102</small>		U. S. ARMY ENGINEER DISTRICT, SAN FRANCISCO CORPS OF ENGINEERS SAN FRANCISCO, CALIFORNIA	
DRAWN BY: MARIN COUNTY		CALIFORNIA	
BOLINAS LAGOON			
TOPOGRAPHY			
APPROVAL RECOMMENDED: CHIEF DESIGNER		APPROVED: CHIEF TOPOGRAPHIC ENGINEER	
PREPARED UNDER THE DIRECTION OF JOHN M. ADIST COLONEL, C.E., DISTRICT ENGINEER		SCALE: 1" = 100' Job No. DRAWING NUMBER SHEET 15 OF 20	



NOTES
 SURVEYED BY TOWILL INC. FOR THE CORPS OF ENGINEERS.
 BASE MAPS WERE COMPILED BY PHOTOGRAMMETRIC METHODS FROM AERIAL PHOTOGRAPHY FLOWN IN SEPT. 1978.
 PLANE SIRD BEARINGS AND COORDINATES ARE BASED ON THE STATE OF CALIFORNIA COORDINATE SYSTEM, LAMBERT CONFORMAL PROJECTION, ZONE 8 CALIFORNIA, AS DESCRIBED IN U.S.G. & G.S. SPECIAL PUBLICATION NO. 258. ELEVATIONS ARE BASED ON THE DATUM OF MEAN SEA LEVEL.
 REFERENCE BENCH MARK IS A U.S.G. & G.S. BRONZE DISK STAMPED 1480, 1851 LOCATED 64 MILES NORTH ALONG BURLINGAME HWY. FROM THE POST OFFICE IN BOLINAS, AT A BRIDGE OVER PINE SALCH CREEK, IN THE TOP OF THE SOUTHWEST WINDMILL, APPROX. 400 FEET NORTH OF BOLINAS UNION SCHOOL. ELEVATION IS 16.58 FEET M.S.L.
 CONTOUR INTERVAL IS 2 FEET

- △ SUSCOL
- × BM 5457 235.67
- 99+12.33
- 56.2 (Field)
- 23.5 (Pillar)
- FIRST ST.
- UNPAVED PRIVATE OR UNIMPROVED ROAD
- TRAIL
- SIDEWALK (Small seen showing)
- RAILROADS (Drawn to scale)
- WALL
- FENCE
- GUARD RAILING
- BUILDINGS
- FOUNDATIONS, SLABS, PARKING AREA, RUBB
- CULVERT, BRIDGE
- MONUMENTED CONTROL POINT
- BENCH MARK
- TRAVERSE STATION (NOT MONUMENTED)
- SPOT ELEVATIONS (IDEAL POINT INDICATES POSITION)
- PAVED ROAD
- UNPAVED PRIVATE OR UNIMPROVED ROAD
- TRAIL
- SIDEWALK (Small seen showing)
- RAILROADS (Drawn to scale)
- WALL
- FENCE
- GUARD RAILING
- BUILDINGS
- FOUNDATIONS, SLABS, PARKING AREA, RUBB
- CULVERT, BRIDGE

LEGEND

- POWER LINE
- POWER LINE (TOWER BASE TO SCALE)
- PIPE
- PIPE LINE LABEL WATER, OIL, ETC. IF KNOWN
- AREAS SUCH AS DUMPS, MUD FLATS, EXCAVATIONS, ETC.
- WATER SURFACE—STREAM, LAKE, POND
- TANK
- UTILITY POLE
- STREET LIGHT
- MANHOLE
- (L&S) FLAGPOLE, STANOPPE, STACK, ETC.
- PRINCIPAL POINT
- FIRE HYDRANT
- CATCH BASIN
- TREE OR BRUSH COVER



2
3
4
5
6
7
8
9
10
11
12
13
14
15
16
17
18
19
20

SHEET INDEX



SYMBOL	DESCRIPTION	DATE	APPROVAL
REVISIONS			
Towill, Inc.		U. S. ARMY ENGINEER DISTRICT, SAN FRANCISCO CORPS OF ENGINEERS SAN FRANCISCO, CALIFORNIA	
DRAWN BY:	MARIN COUNTY	CALIFORNIA	
TRACED BY:	BOLINAS LAGOON		
CHECKED BY:	TOPOGRAPHY		
SUBMITTED:			
APPROVAL RECOMMENDED:	APPROVED:	DATE:	
CHIEF, DESIGN BRANCH	CHIEF, TOPOGRAPHY BRANCH		
PREPARED UNDER THE DIRECTION OF JOHN M. ADST COLONEL, C.E., DISTRICT ENGINEER		SCALE: 1" = 100'	JOB No.
		DRAWING NUMBER	
		SHEET 16 OF 20	



NOTES:
 SURVEYED BY TOWILL INC. FOR THE CORPS OF ENGINEERS.
 BASE MAPS WERE COMPILED BY PHOTOGRAMMETRIC METHODS FROM AERIAL PHOTOGRAPHY FLOREN IS 8871, 1978.
 PLANE GRID BEARINGS AND COORDINATES ARE BASED ON THE STATE OF CALIFORNIA COORDINATE SYSTEM (LAMBERT CONFORMAL PROJECTION), ZONE 3 CALIFORNIA, AS DESCRIBED IN U.S.G. & G.S. SPECIAL PUBLICATION NO. 258.
 ELEVATIONS ARE BASED ON THE DATUM OF MEAN SEA LEVEL.
 REFERENCE BENCH MARK IS A U.S.C. & G.S. BRONZE DISK STAMPED M480, 1881, LOCATED 0.8 MILES NORTH ALONG SHORELINE HWY. FROM THE POST OFFICE IN BOLINAS, AT A BEND OVER PINE GULCH CREEK, IN THE TOP OF THE SOUTHWEST WINDFALL, APPROX. 400 FEET NORTH OF BOLINAS UNION SCHOOL. ELEVATION IS 16.03 FEET NGVD.
 CONTOUR INTERVAL IS 2 FEET

- △ SUBCOL
- × BM 5457
235.67
- 98+12.33
- 56.2 (Field)
- 23.5 (Platter)
- FIRST ST.
- PAVED ROAD
- UNPAVED, PRIVATE OR UNIMPROVED ROAD
- TRAIL
- SIDEWALK (Small scale drawing)
- RAILROADS (Drawn to scale)
- WALL
- WALLS-RETAINING WALL, SEAWALL, ETC.
- FENCE
- GUARD RAILING
- BUILDINGS
- FOUNDATIONS, SLABS, PARKING AREA, RUINS
- CLVERT, BRIDGE

LEGEND

- +—+— POWER LINE
- +—+— POWER LINE (TOWER BASE TO SCALE)
- PIPE
- PIPE LINE LABEL WATER, OIL, ETC. IF KNOWN
- AREAS SUCH AS DUMPS, MUD FLATS, EXCAVATIONS, ETC.
- WATER SURFACE-STREAM, LAKE, POND
- TANK
- FIRE HYDRANT
- UTILITY POLE
- CATCH BASIN
- STREET LIGHT
- TREE OR BRUSH COVER
- MANHOLE
- PLA-SPOLE, STAKE/PIPE, STACK, ETC.
- PRINCIPAL POINT



2
3
4
5
6
7
8
9
10
11
12
13
14
15
16
17
18
19
20

SHEET INDEX



SYMBOL	DESCRIPTION	DATE	APPROVAL
REVISIONS			
Towill, Inc.		U. S. ARMY ENGINEER DISTRICT, SAN FRANCISCO	
CORPS OF ENGINEERS		SAN FRANCISCO, CALIFORNIA	
DRAWN BY:	MARIN COUNTY	CALIFORNIA	
TRACED BY:	BOLINAS LAGOON		
CHECKED BY:	TOPOGRAPHY		
SUBMITTED:			
APPROVAL RECOMMENDED:	APPROVED:	DATE:	
CHIEF DESIGNER/DESIGNER	CHIEF ENGINEER/ENGINEER		
PREPARED UNDER THE DIRECTION OF		SCALE: 1" = 100'	JOB NO.
JOHN M. ADRI		DRAWING NUMBER	
COLONEL, C.E., DISTRICT ENGINEER		SHEET 17 OF 20	



NOTES:
 SURVEYED BY TOWILL, INC. FOR THE CORPS OF ENGINEERS.
 BASE MAPS WERE COMPILED BY PHOTOGRAMMETRIC METHODS FROM AERIAL PHOTOGRAPHY FLOWN 18 SEPT. 1978
 PLANE GRID BEARINGS AND COORDINATES ARE BASED ON THE STATE OF CALIFORNIA COORDINATE SYSTEM (LAMBERT CONFORMAL PROJECTION), ZONE 3 CALIFORNIA, AS DESCRIBED IN U.S.G.A. G.S. SPECIAL PUBLICATION NO. 253. ELEVATIONS ARE BASED ON THE DATUM OF MEAN SEA LEVEL.
 REFERENCE BENCH MARK IS A U.S.G. & G.S. BRONZE DISK STAMPED MARO 1951 LOCATED 0.8 MILES NORTH ALONG SHORELINE HWY. FROM THE POST OFFICE IN BOLINAS AT A BRIDGE OVER PINE GLEACH CREEK IN THE TOP OF THE SOUTHWEST KENOWALL, APPROX. 400 FEET NORTH OF BOLINAS UNION SCHOOL. ELEVATION IS 15.03 FEET M.S.L.
 CONTOUR INTERVAL IS 2 FEET

- △ SUSCOL
- × BM 5457
- 99+12.33
- 56.7 (Field)
- 23.5 (Plater)
- FIRST ST.
- UNPAVED, PRIVATE OR UNIMPROVED ROAD
- TRAIL
- SIDEWALK (Small scale drawing)
- RAILROADS (Drawn to scale)
- WALL
- FENCE
- GUARD RAILING
- BUILDINGS
- FOUNDATIONS, SLABS, PARKING AREA, PAVES
- CIVIL BRIDGE

LEGEND

- POWER LINE
- POWER LINE (TOWER BASE TO SCALE)
- PIPE
- AREAS SUCH AS DUMPS, M.D. PLATS, EXCAVATIONS, ETC.
- WATER SURFACE-STREAM, LAKE, POND
- TANK
- UTILITY POLE
- STREET LIGHT
- MANHOLE
- FLAGPOLE, STANDPIPE, STACK, ETC.
- PRINCIPAL POINT
- FIRE HYDRANT
- GATCH BASIN
- TREE OR BRUSH COVER



2
3 4
5 6
7 8
9 10
11 12
13 14
15 16
17
18
19
20

SHEET INDEX



SYMBOL	DESCRIPTION	DATE	APPROVAL
REVISIONS			
Towill, Inc.		U. S. ARMY ENGINEER DISTRICT, SAN FRANCISCO CORPS OF ENGINEERS SAN FRANCISCO, CALIFORNIA	
DRAWN BY:	MARIN COUNTY	CALIFORNIA	
TRACED BY:			
CHECKED BY:	BOLINAS LAGOON		
SUBMITTED:	TOPOGRAPHY		
APPROVAL RECOMMENDED:	APPROVED:	DATE:	
CHIEF, DESIGN AND BRANCH	CHIEF, ENGINEERING DIVISION		
PREPARED UNDER THE DIRECTION OF JOHN M. ADST		SCALE: 1" = 100'	JOB NO.
COLONEL, C.E. DISTRICT ENGINEER		DRAWING NUMBER	
		SHEET 18 OF 20	



NOTES:
 SURVEYED BY TOWILL INC. FOR THE CORPS OF ENGINEERS.
 BASE MAPS WERE COMPILED BY PHOTOGRAMMETRIC METHODS FROM AERIAL PHOTOGRAPHY FLOWN 18 SEPT. 1978.
 PLANE AND BEARINGS AND COORDINATES ARE BASED ON THE STATE OF CALIFORNIA COORDINATE SYSTEM (LAMBERT CONFORMAL PROJECTION), ZONE 3 CALIFORNIA, AS DESCRIBED IN U.S.C. & G.S. SPECIAL PUBLICATION NO. 253. ELEVATIONS ARE BASED ON THE DATUM OF MEAN SEA LEVEL.
 REFERENCE BENCH MARK IS A U.S.C. & G.S. BRONZE DISK STAMPED 1880, 1981 LOCATED 0.8 MILES NORTH ALONG SHORELINE HWY. FROM THE POST OFFICE IN BOLINAS, AT A BRIDGE OVER PINE GULCH CREEK IN THE TOP OF THE SOUTHWEST WINGWALL, APPROX. 400 FEET NORTH OF BOLINAS UNION SCHOOL. ELEVATION IS 15.08 FEET M.S.L.
 CONTOUR INTERVAL IS 2 FEET

- △ SUSCOL
- × BM 5457
235.67
- 99+12.33
- 54.2 (Field)
- 25.5 (Platter)
- F I R S T ST.
- PAVED ROAD
- UNPAVED, PRIVATE OR UNIMPROVED ROAD
- TRAIL
- SIDEWALK
- RAILROADS
- WALLS
- WALLS-RETAINING WALL, SEAWALL, ETC.
- FENCE
- GUARD RAILING
- BUILDINGS
- FOUNDATIONS, SLABS, PARKING AREA, RIMS
- CULVERT, BRIDGE

LEGEND

- POWER LINE
- POWER LINE (TOWER BASE TO SCALE)
- PIPE
- PIPE LINE LABEL WATER, OIL, ETC. IF KNOWN
- AREAS SUCH AS DUMPS, MUD FLATS, EXCAVATIONS, ETC.
- WATER SURFACE-STREAM, LAKE, POND
- TANK
- UTILITY POLE
- ⊙ STREET LIGHT
- MANHOLE
- (L&S) FLAGPOLE, STANDPIPE, STACK, ETC.
- ⊕ PRINCIPAL POINT
- FIRE HYDRANT
- CATCH BASIN
- TREE OR BRUSH COVER

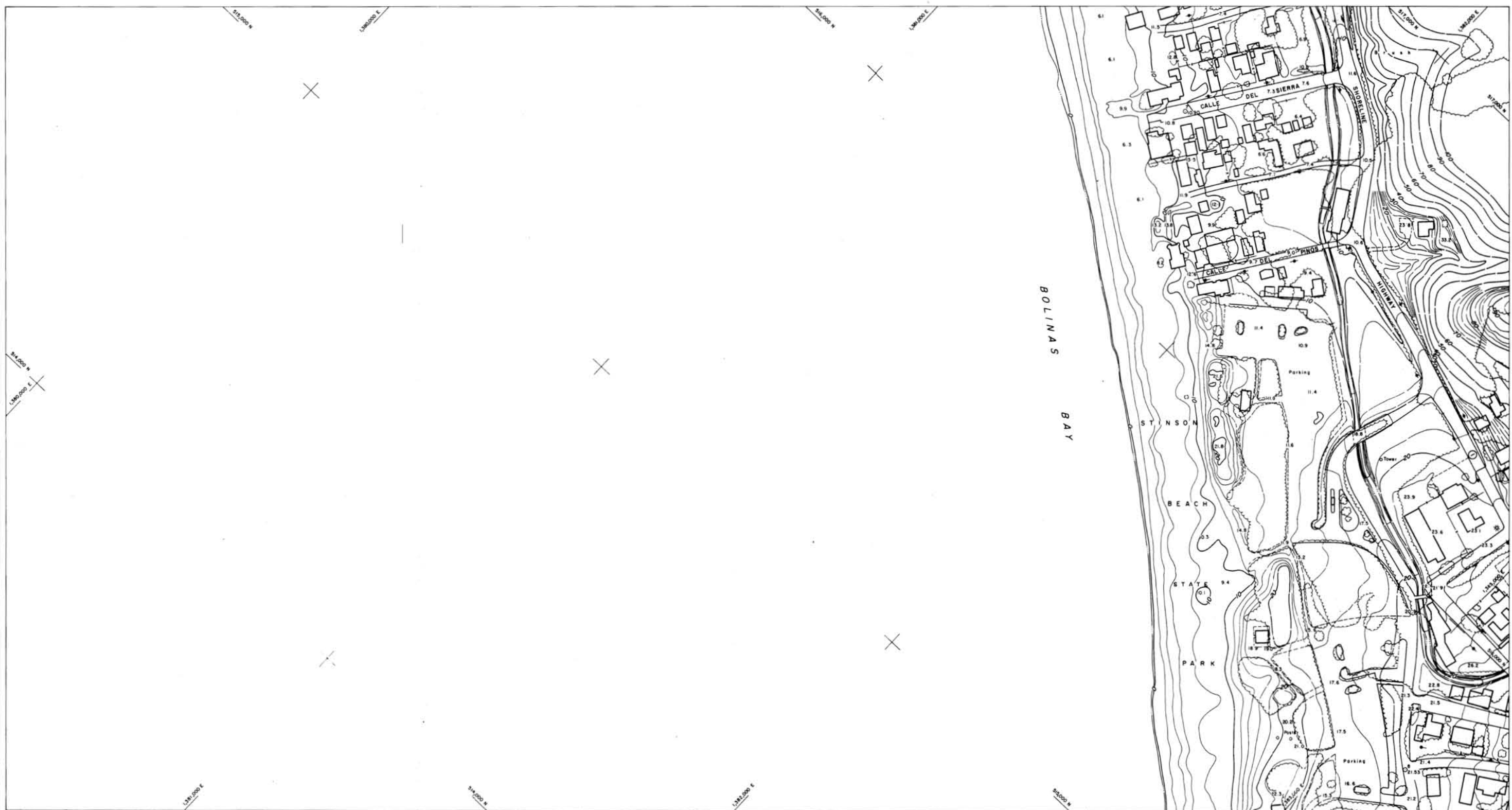


2
3 4
5 6
7 8
9 10
11 12
13 14
15 16
17
18
19
20

SHEET INDEX



SYMBOL	DESCRIPTION	DATE	APPROVAL
REVISIONS			
Towill, Inc.		U. S. ARMY ENGINEER DISTRICT, SAN FRANCISCO CORPS OF ENGINEERS SAN FRANCISCO, CALIFORNIA	
DRAWN BY:	MARIN COUNTY	CALIFORNIA	
TRACED BY:	BOLINAS LAGOON		
CHECKED BY:	TOPOGRAPHY		
SUBMITTED:			
APPROVAL RECOMMENDED:	APPROVED:	DATE:	
CHIEF DESIGNER SIGNATURE	CHIEF ENGINEERING SIGNATURE		
PREPARED UNDER THE DIRECTION OF JOHN M. ADIST COLONEL, C.E., DISTRICT ENGINEER		SCALE: 1" = 100'	JOB NO.
		DRAWING NUMBER	
		SHEET 19 OF 20	



NOTES
 SURVEYED BY TOMILL INC. FOR THE CORPS OF ENGINEERS.
 BASE MAPS WERE COMPILED BY PHOTOGRAMMETRIC METHODS FROM AERIAL PHOTOGRAPHY FLOWN 18 SEPT. 1978.
 PLANE GRID MEASURES AND COORDINATES ARE BASED ON THE STATE OF CALIFORNIA COORDINATE SYSTEM (LAMBERT CONFORMAL PROJECTION), ZONE 3 CALIFORNIA, AS DESCRIBED IN U.S.G. & G.S. SPECIAL PUBLICATION NO. 253. ELEVATIONS ARE BASED ON THE DATUM OF MEAN SEA LEVEL.
 REFERENCE BENCH MARK IS A U.S.G. & G.S. BRONZE DISK STAMPED M490, 1951 LOCATED 0.9 MILES NORTH ALONG SHORELINE HWY. FROM THE POST OFFICE IN BOLINAS, AT A BRIDGE OVER PINE CREEK, IN THE TOP OF THE SOUTHWEST WINDWALL, APPROX. 430 FEET NORTH OF BOLINAS UNION SCHOOL. ELEVATION IS 16.03 FEET N.G.V.D.
 CONTOUR INTERVAL IS 2 FEET

- △ SUSCOL
- × BM 2457
- 99+12.33
- 56.7 (Field)
- 23.5 (Pillar)
- FIRST ST.
- PAVED ROAD
- UNPAVED PRIVATE OR UNIMPROVED ROAD
- TRAIL
- SIDEWALK (Small scale drawing)
- RAILROADS (Drawn to scale)
- WALL
- WALLS-RETAINING WALL, SEAWALL, ETC.
- FENCE
- GUARD RAILING
- BUILDINGS
- FOUNDATIONS, SLABS, PARKING AREA, RUBB
- OLYVERT, BRIDGE
- MONUMENTED CONTROL POINT
- BENCH MARK
- TRAVERSE STATION (NOT MONUMENTED)
- SPOT ELEVATIONS (DECIMAL POINT INDICATES POSITION)
- PAVED ROAD
- UNPAVED PRIVATE OR UNIMPROVED ROAD
- TRAIL
- SIDEWALK (Small scale drawing)
- RAILROADS (Drawn to scale)
- WALL
- WALLS-RETAINING WALL, SEAWALL, ETC.
- FENCE
- GUARD RAILING
- BUILDINGS
- FOUNDATIONS, SLABS, PARKING AREA, RUBB
- OLYVERT, BRIDGE

LEGEND

- +—+—+— POWER LINE
- +—+—+—+— POWER LINE (TOWER BASE TO SCALE)
- |— PIPE
- |— PIPE LINE LABEL WATER, OIL, ETC., IF KNOWN
- (Low) AREAS SUCH AS DUMPS, MUD FLATS, EXCAVATIONS, ETC.
- W WATER SURFACE-STREAM, LAKE, POND
- TANK
- FIRE HYDRANT
- UTILITY POLE
- CATCH BASIN
- STREET LIGHT
- TREE OR BRUSH COVER
- MANHOLE
- (Label) FLAGPOLE, STANDPIPE, STACK, ETC.
- PRINCIPAL POINT



2
3
4
5
6
7
8
9
10
11
12
13
14
15
16
17
18
19
20

SHEET INDEX



SYMBOL	DESCRIPTION	DATE	APPROVAL
REVISIONS			
Tomill, Inc.		U. S. ARMY ENGINEER DISTRICT, SAN FRANCISCO	
CORPS OF ENGINEERS		SAN FRANCISCO, CALIFORNIA	
DRAWN BY: MARIN COUNTY		CALIFORNIA	
BOLINAS LAGOON			
TOPOGRAPHY			
APPROVAL RECOMMENDED:		APPROVED:	
CHIEF, DESIGN FOR SEARCH		CHIEF, ENGINEERING DIVISION	
PREPARED UNDER THE DIRECTION OF JOHN M. ADSIT		SCALE: 1" = 100'	
COLONEL, C.E., DISTRICT ENGINEER		DRAWING NUMBER	
		SHEET 20 OF 20	